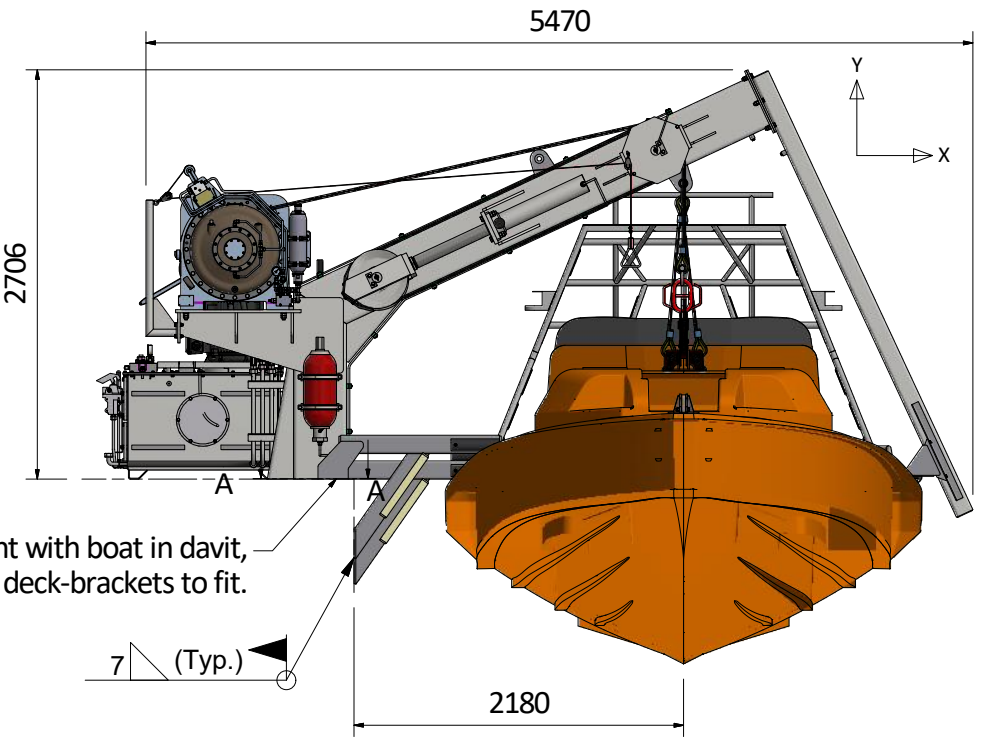
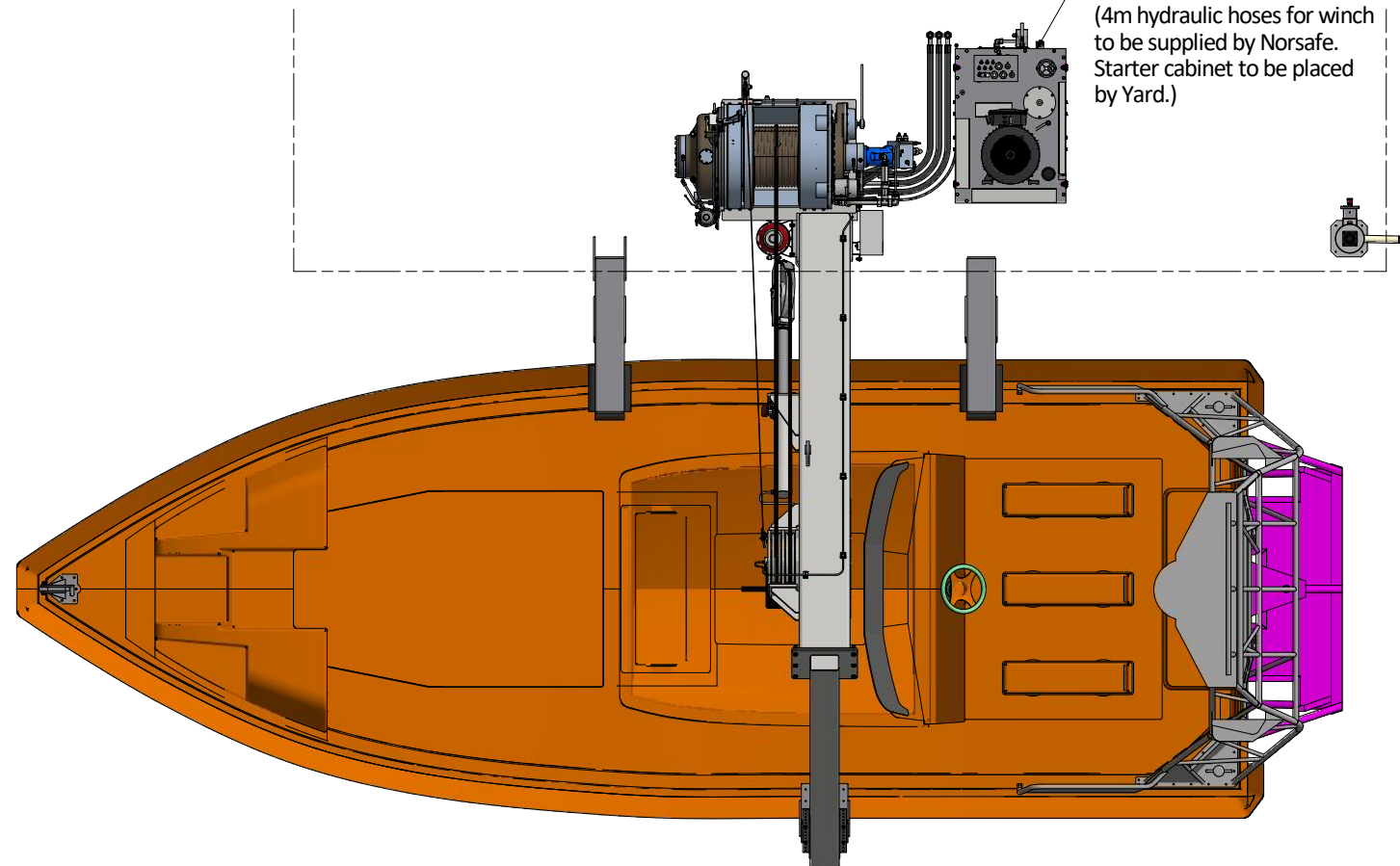


REMOTE CONTROL STAND
(To be placed by yard on a suitable place.
8m of hoses pilot lines between HPU and remote control stand.)



Adjust height with boat in davit,
cut the two deck-brackets to fit.

HYDRAULIC POWER UNIT
(4m hydraulic hoses for winch to be supplied by Norsafe. Starter cabinet to be placed by Yard.)



NDC-65 RESCUE BOAT DAVIT

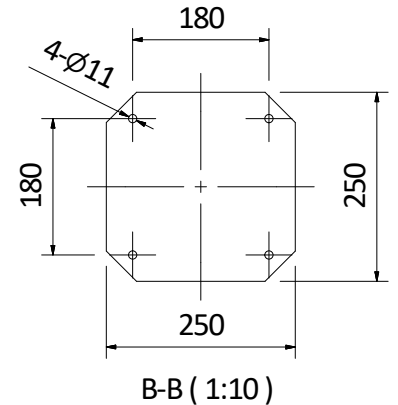
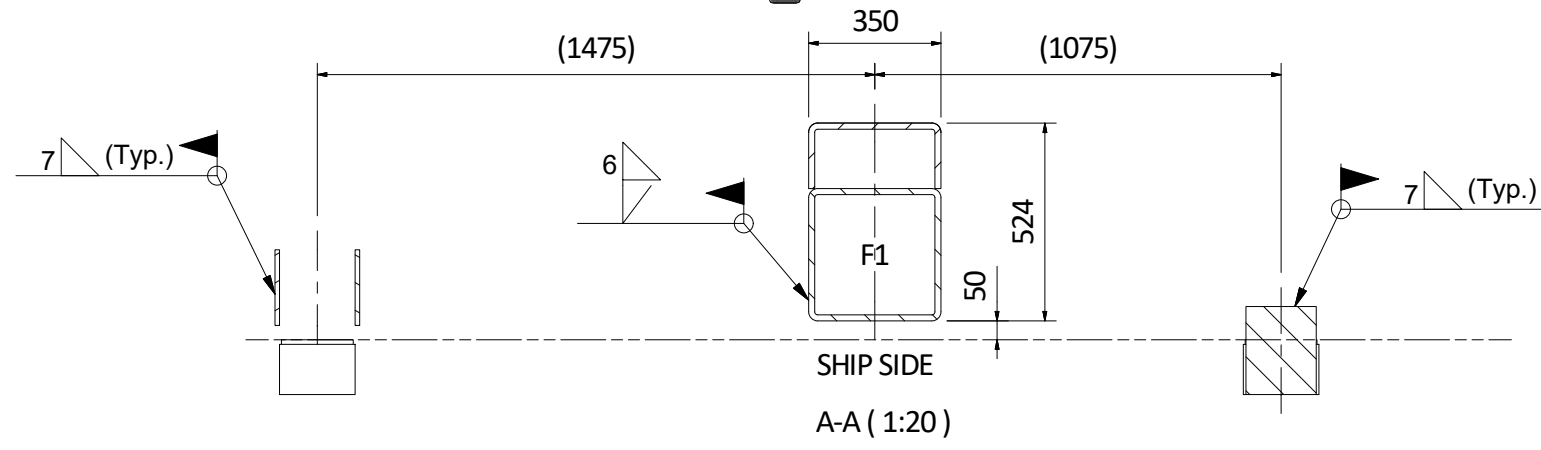
- SWL: 6500 kg
- WINCH TYPE: ZOLLERN ZR 4.24
- HOISTING SPEED: MINIMUM 18 M/MIN (SOLAS)
- LOWERING SPEED: MINIMUM 18 M/MIN (SOLAS)
- DESIGN SPEC: 20° TRIM, 20° LIST SIMULTANOUSLY
- DEAD SHIP LOWERING SPEED: MAXIMUM 60 M/MIN (BY GRAVITY)
- DAVIT WEIGHT: APPROX. 2850 kg

NOTES:

1. ACCESS PLATFORMS, HANDRAILING, DOUBLE PLATES ETC.: YARD SUPPLY.
2. ELECTRIC WIRING BY YARD.
3. FIELD WELDS TO BE WELDED BY YARD ARE SHOWN BY ∇ .
4. ALL FIELD WELDS TO BE PERFORMED ACC. TO APPROVED WPS. (YARD RESPONSIBILITY). ALL FIELD WELDING IS SUBJECT TO CLASS APPROVAL PRIOR TO START WELDING.
5. THE SWL FOR THE DAVIT WILL BE ADJUSTED TO SUIT THE BOAT FOR EACH DELIVERY.
6. HYDRAULIC HOSES FROM HPU TO WINCH MUST BE FASTENED BY YARD.
7. LOCATION OF HPU AND CONTROL STAND TO BE DECIDED BY YARD.
8. LOCATION OF BOAT SUPPORTS TO BE ADJUSTED TO SUIT THE BOAT TYPE FOR EACH DELIVERY.

REACTION FORCES IN DECK						
F1 (Max.)	Force X (kN)	Force Y (kN)	Force Z (kN)	Mom X (kNm)	Mom Y (kNm)	Mom Z (kNm)
	±28.71	84.03	±28.71	-73.08	±66.40	208.59

Reaction forces as joint loads each side, marked with nodes on deck interface.
For orientation of forces see legend with marked XYZ vectors.
All forces are point loads, nominal forces without any factors.



1	Re-issued for approval	GACA	CENI	WAGU	26.06.2019
0	Issued for approval	GACA	WAGU	TT	12.05.2017
REV	DESCRIPTION	BY	CHECK	APPRO	DATE

REVISION HISTORY

VIKING NORSAFE

VIKING NORSAFE Life-Saving Equipment Norway AS
P.O. Box 115
4852 Faerвик
NORWAY

Tel: +47 37 05 85 00
Fax: +47 37 05 85 01
24/7 Service: +47 37 05 63 33
Email: viking@viking-life.com

This drawing is the sole property of VIKING Norsafe Life-Saving Equipment Norway AS. It must not be submitted to other parties nor used in any manner detrimental to our interests. It shall not be copied, reproduced, used for manufacturing or sale without the written consent of VIKING Norsafe Life-Saving Equipment Norway AS. All rights are reserved.

DWG SIZE: A3	SCALE: 1:50	COPY OF:	PART NO.:	WEIGHT: N/A	SHEET: 1/11
CLIENT NO.:	PROJECTION METHOD:	NDC-65 RESCUE BOAT DAVIT WITH MAGNUM-850			
TOLERANCES: ISO 2768-mk, ISO 13920-BF	REVISION: 1	GENERAL ARRANGEMENT			
DWG No.: G-501990	PROJECT:				