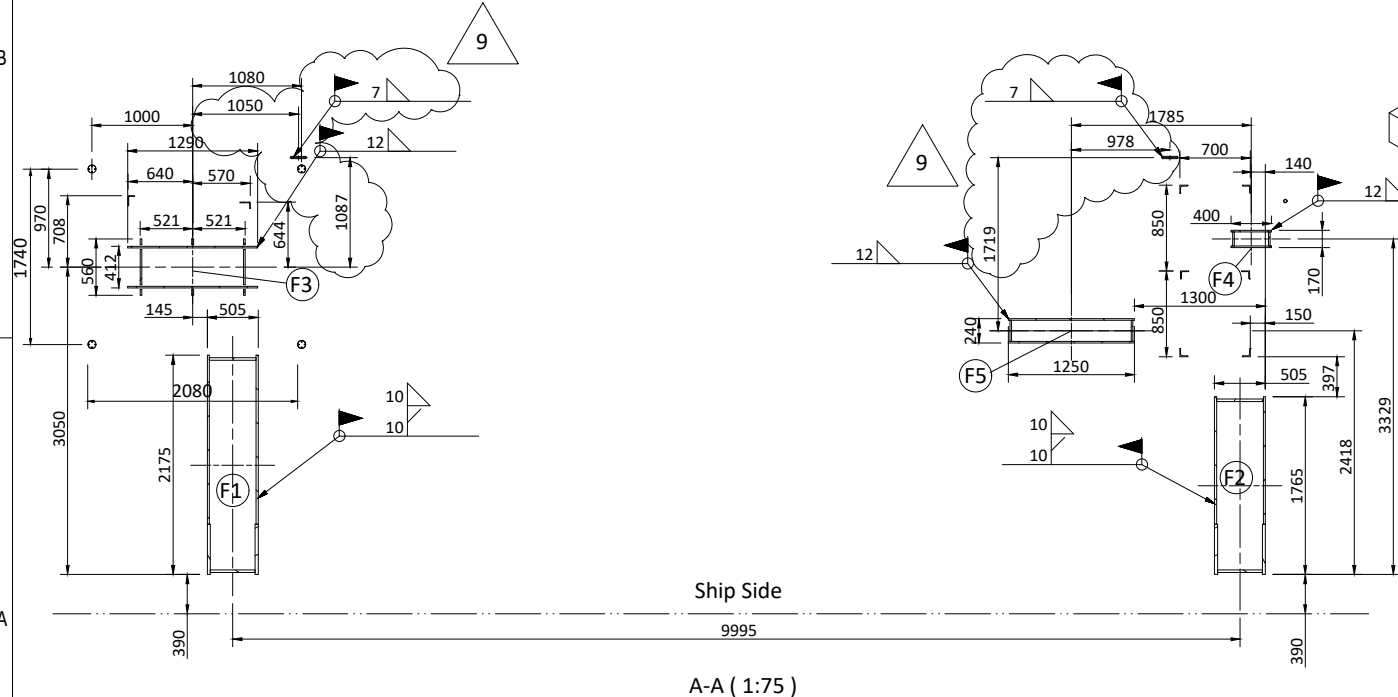


LHD-200 Lifeboat Davit

Technical data:
 Davit weight approx: 11,000 kg
 Davit safety working load: 20,000 kg
 Lowering: 20,000 kg
 Hoisting: Empty lifeboat + 3 persons
 Max. launching height: 40 m (incl. list & trim)

| REACTION FORCES IN DECK | | | | | | | |
|-------------------------|------------|---------|---------|---------|-----------|-----------|-----------|
| Node | Indication | Fx (kN) | Fy (kN) | Fz (kN) | Mx (kNm) | My (kNm) | Mz (kNm) |
| F1 | Max/Min | +44/-44 | +130/0 | +23/-23 | +181/-181 | +118/-118 | +589/-589 |
| F2 | Max/Min | +44/-44 | +130/0 | +23/-23 | +181/-181 | +118/-118 | +589/-589 |
| F3 | Max/Min | 0 | +28 | -100 | +31 | 0 | 0 |
| F4 | Max/Min | -50 | 0 | +50 | -11.5 | 0 | -11.5 |
| F5 | Max/Min | 0 | 0 | +100 | -21.5 | 0 | 0 |



Ship Side
 A-A (1:75)

Notes:

1. All embarkation and service platforms etc.: Yard supply;
2. Field welds to be performed by yard are shown by ∇ ;
3. All field welds to be performed according to approved WPS (Yard responsibility). All field welding is subject to Class approval prior to start welding;
4. Reaction forces as joint loads each side, marked with nodes on deck interface.
 For orientation of forces see legend with marked XYZ vectors.
 All forces are point loads, nominal forces without any factors.
5. Starter cabinet and remote control to be located by yard.
6. Boat supports and lashing brackets to be located by yard.

| REV | DESCRIPTION | BY | CHECK | APPRO | DATE |
|-----|------------------------------|------|-------|-------|------------|
| 9 | Updated view of lashing ass. | ALJI | MISO | WAGU | 28.05.2021 |
| 8 | Issued for approval | ALJI | MISO | WAGU | 02.07.2019 |
| 7 | Issued for approval | ALJI | GACA | WAGU | 22.11.2018 |
| 6 | Issued for approval | ALJI | GACA | WAGU | 27.08.2018 |

REVISION HISTORY

| | | | |
|---------------------------------------|--------------------|---|-------------------------------------|
| | | VIKING NORSAFE VIKING NORSAFE Life-Saving Equipment Norway AS P.O. Box 115 4852 Faerвик NORWAY Tel: +47 37 05 85 00 Fax: +47 37 05 85 01 24/7 Service: +47 37 05 63 33 Email: viking@viking-life.com | |
| DWG SIZE: A3 | SCALE: 1:75 | COPY OF: | PART NO. / WEIGHT / N/A / SHEET 1/1 |
| CLIENT NO: | PROJECTION METHOD: | LHD-200 for Minima-88 | |
| TOLERANCES: ISO 2768-mk, ISO 13920-BF | REVISION: 9 | STARBOARD GENERAL ARRANGEMENT | |
| DWG No: G-501527 | PROJECT: | | |