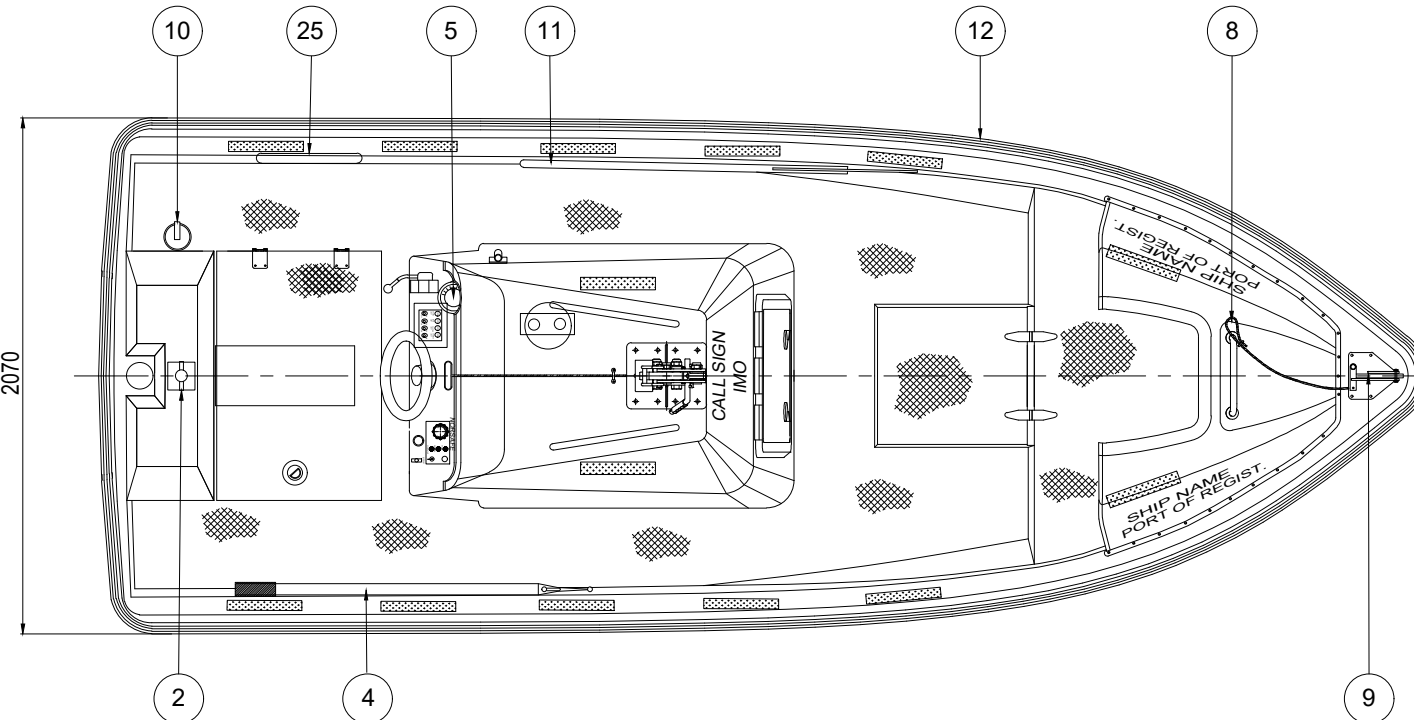
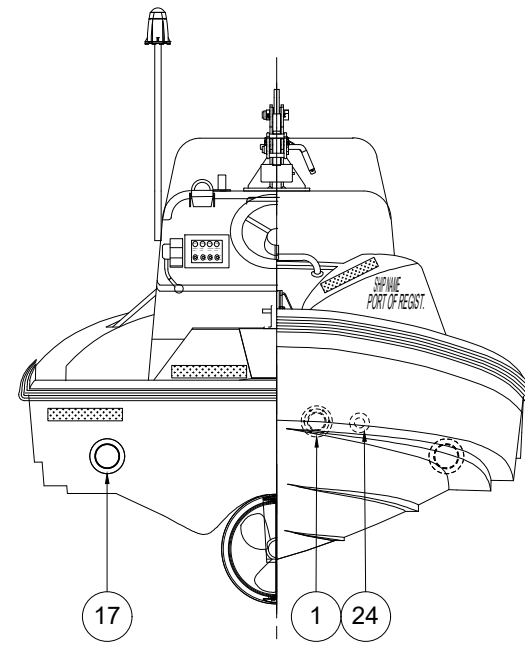
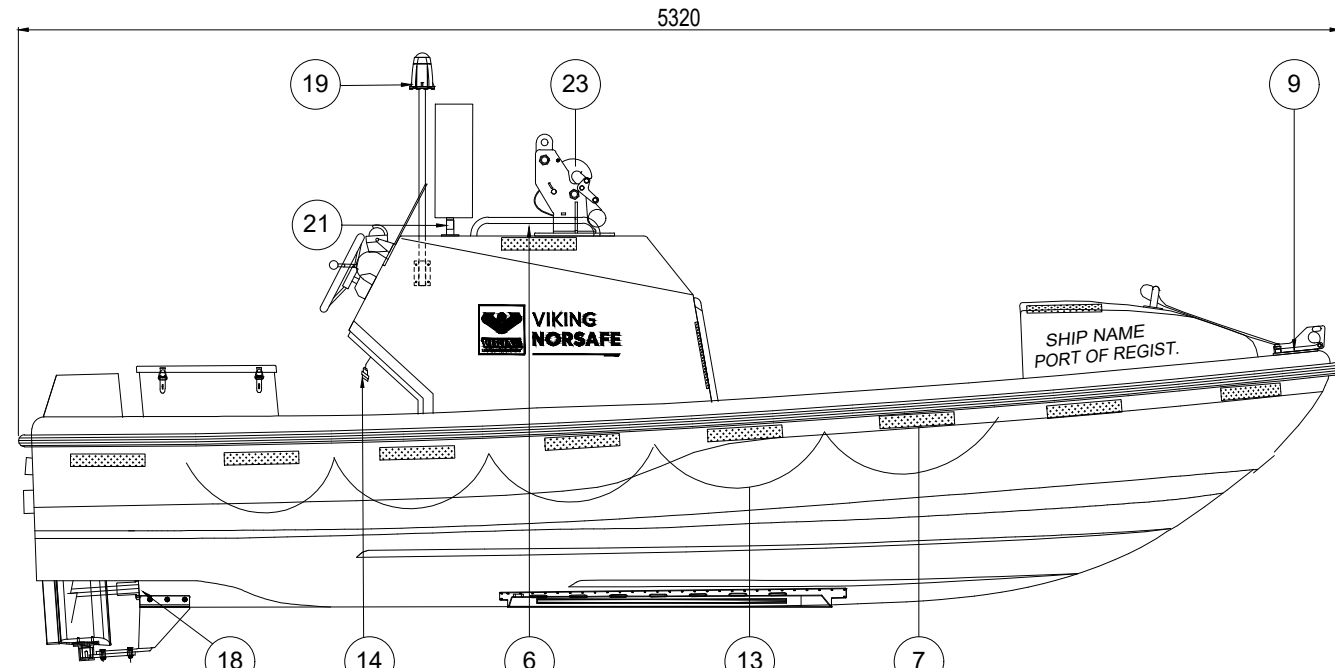


MAIN DIMENSIONS & SPECIFICATION	
LENGTH ON FENDER:	5,30m
LENGTH OVER ALL:	5,32m
BREADTH ON FENDER:	2,07m
HEIGHT OVERALL W/K4-D FM:	1,82m
HOOK HEIGHT ABOVE KEEL W/K4-D FM:	1,72m
WEIGHT W/FUEL AND LOOSE EQUIPMENT:	1155kg
DAVIT LOAD W/6 PERS.(82,5kg):	1650kg
DAVIT LOAD W/8 PERS.(82,5kg):	1815kg
DIESEL ENGINE TYPE:	NLDE-3 SABB L3



ITEM	QTY	DESCRIPTION	PART NO	DOC.REF	MATERIAL	T. MASS
25	1	Emergency steering handle				
24	1	Outlet from bilge pump				
23	1	Release hook K4-D FM				
22	1	Diesel engine				
21	1	Radar reflector bracket				
20	2	Batteries				
19	1	Position light				
18	1	Propeller with nozzle				
17	2	Water outlet				
16	1	Fuel tank				
15	1	Equipment tank				
14	1	Charge plug				
13	2	Life line				
12	1	Fender				
11	2	Paddles				
10	1	Fire extinguisher				
9	1	Painter release hook				
8	1	Painter release handle				
7	1 set	Reflex				
6	3	Hand hold				
5	1	Compass				
4	1	Boat hook				
3	1	Search light				
2	1	Bollard				
1	1	Exhaust				

ITEM	QTY	DESCRIPTION	PART NO	DOC.REF	MATERIAL	T. MASS
BILL OF MATERIALS						

7	UPDATED ON ENGINE TYPE	PHLI	HXU	THWA	04.08.2022
6	UPDATE DRAWING TEMPLATE	PHLI	JAYE	THWA	15.06.2019
5	UPDATE ARRANGEMENT	PHLI	JKJI	THWA	12.04.2018
4	MOVE CHARGER PLUG LOCATION	PHLI	JKJI	THWA	08.03.2018



VIKING Norsafe Life-Saving Equipment Norway AS  
 P.O.Box 115 Tel: +47 37 05 85 00  
 4852 Færvik Fax: +47 37 05 85 01  
 NORWAY 24/7 Service: +47 37 05 63 33  
 Email: Viking-Norsafe@viking-life.com

Project number	Project name	Client number
Title		Material Number
MIDGET-530 MKII PROPELLER		Weight
K4-D FM		0,0 kg
RESCUE BOAT		Projection method
Drawing type		Scale
GA	ISO 2768-mK, ISO 13920-BF	1:1
Drawing Number	Revision	Sheet Size
G-500475	7	A3
		Sheet No.
		1/1

Due to manufacturing reasons, engine type and HP, weight may vary.

Due to manufacturing reasons dimensions may vary up to 50mm.