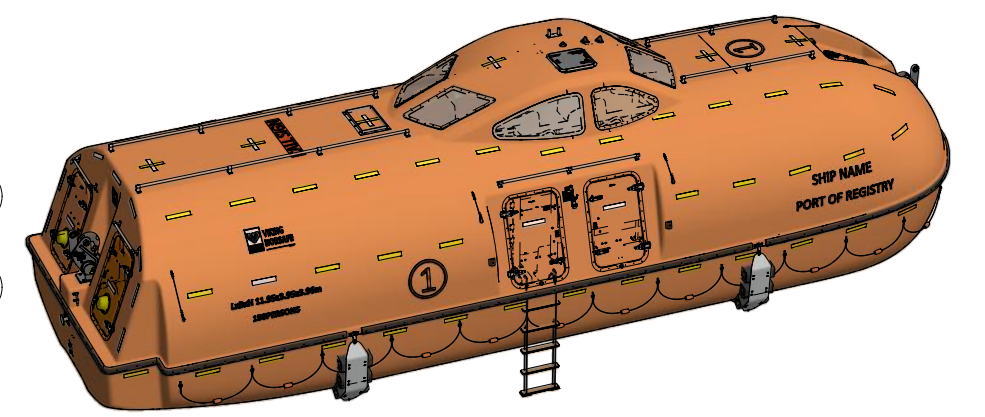
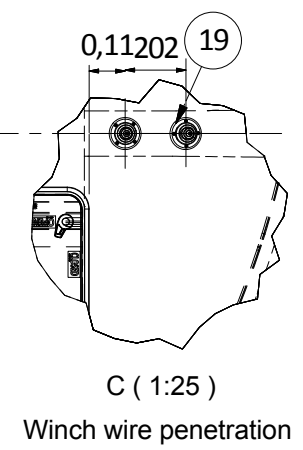


		Table	
POS	QTY	DESCRIPTION	MATERIAL
1	8	WINDOW	Stalinite
2	1	TOP HATCH	Aluminium
3	1	FORWARD HATCH	GRP
4	3	UNDER PRESSURE RELEASE VALVE	GRP/Brass
5	2	BOBBIN	Galv.steel
6	1	KEEL SHOE	Galv.steel
7	1	STEERING NOZZLE	GRP
8	1	BOLLARD	ANSI 316L
9	1	PAINTER RELEASE	Galv.steel
10	4	SIDE HATCHES	GRP
11	1	FENDER	Rubber
12	2	AFT HATCHES	GRP
13	1	POSITION INDICATING LIGHT	
14	2	LIFE LINE	Plastic plating Steel
15	2	SKATE ARRANGEMENT	
16	1	RADAR REFLECTOR BRACKET	ANSI 316L
17	1	42 V POWER SUPPLY	
18	1	STERN GLAND	BRASS
19	2	WINCH WIRE PENETRATION	
20	1	RAIN COLLECTOR SYSTEM	
21	1	ROPPER LADDER	
22	1	RADAR REFLECTOR	
23	4	HANDRAIL	ANSI 316L



**MAIN DIMENSIONS & SPECIFICATION**

LENGTH WITH FENDER:	12,02 m
LENGTH OVER ALL:	11,95 m
BREADTH WITH FENDER:	4,01 m
BREADTH OVER ALL:	3,95 m
HEIGHT OVER ALL:	3,96 m
DEPTH:	1,43 m
HOOK HEIGHT ABOVE KEEL:	2,40 m
HOOK DISTANCE:	11,20 m
WEIGHT FULLY EQUIPPED:	APPROX. 10225 Kg
DAVIT LOAD 150 PERSONS @82,5 KG:	22600 Kg
SPEED:	MIN 6 Knots



**NOTES:**  
 1. Due to manufacturing reasons, dimensions may vary up to 50mm.  
 2. Port side lifeboat shown.

REV	DESCRIPTION	BY	CHECK	APPRO	DATE
2	Updated new template	KAYU	KARL	THWA	26.06.2019
1	Add handrail on the top	JKJI	VX	THWA	20.05.2016
0	Issued for construction	JKJI	VX	THWA	05.02.2016

**REVISION HISTORY**

**VIKING NORSAFE**  
 VIKING NORSAFE Life-Saving Equipment Norway AS  
 P. O. Box 115  
 4852 Faerвик  
 NORWAY  
 Tel: +47 37 05 85 00  
 Fax: +47 37 05 85 01  
 24/7 Service: +47 37 05 63 33  
 Email: viking@viking-life.com

This drawing is the sole property of VIKING NORSAFE Life-Saving Equipment Norway AS. It must not be submitted to other parties nor used in any manner detrimental to our interests. It shall not be copied, reproduced, used for manufacturing or sale without the written consent of VIKING NORSAFE Life-Saving Equipment Norway AS. All rights are reserved.

DWG SIZE: A3	SCALE: 1:60	COPY OF:
CLIENT NO:	PROJECTION METHOD:	EXTERNAL GA
TOLERANCES: ISO 2768-mk, ISO 13920-BF	REVISION: 2	MAXIMA-120 DC
DWG No: G-501228	PROJECT:	GENERAL ARRANGEMENT

PART NO. WEIGHT: 9835,575 kg SHEET: 1 / 11