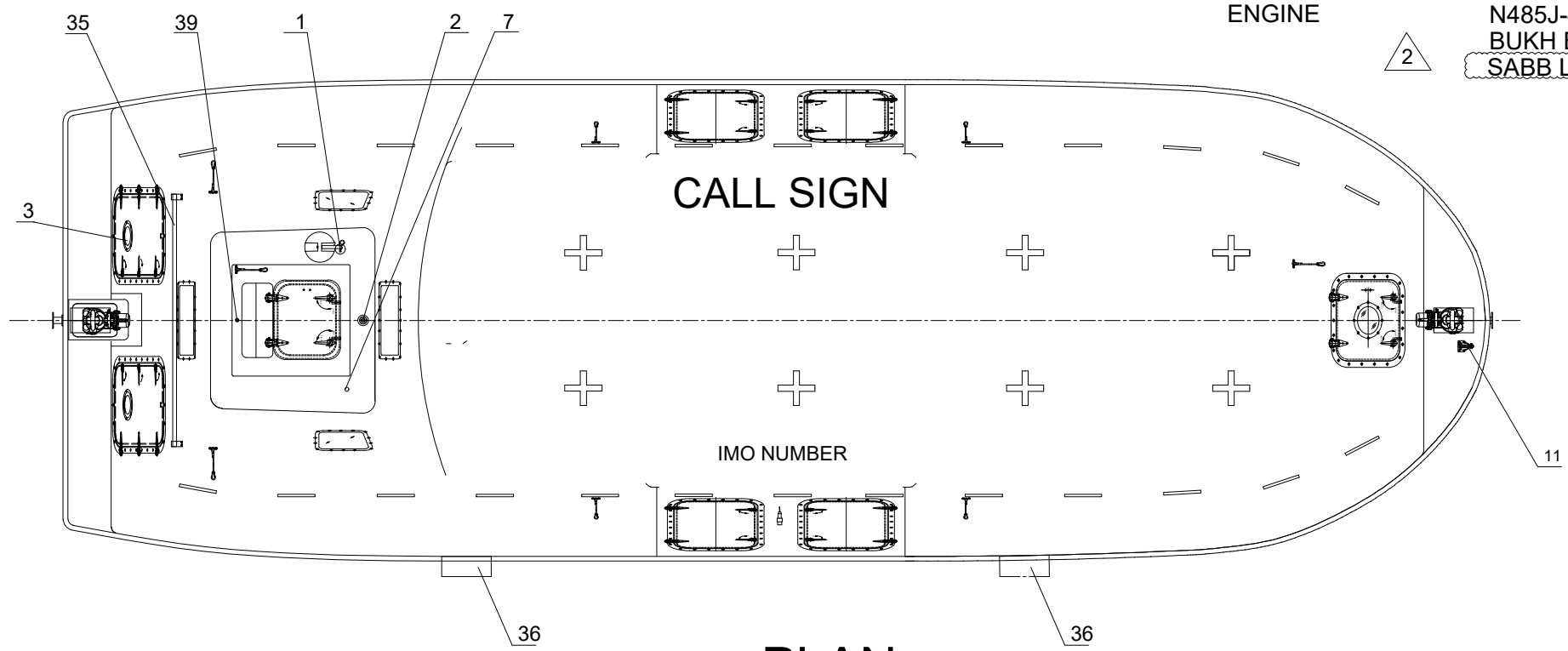


PROFILE

LENGTH (MOULDED) 11.50m
 BREADTH (MOULDED) 3.80m
 DEPTH 1.42m
 HEIGHT 3.54m
 HOOK DIST. 10.96m
 NO. OF PERSON 135P
 HOOK DIB 125
 CRAFT WEIGHT 8485.5KG
 SPEED >6 KNOTS
 TOTAL WEIGHT 19623KG (82.5Kg/pers)
 ENGINE N485J-4
 BUKH BETA 36 EPA
 SABB L4



PLAN

42	EQUIPMENT SHELF	2	F.R.P.
41	WATER SENSOR UNIT	1	
40	EMERGENCY RELEASE VALVE	1	
39	RAIN COLLECTION	1	BRASS
38			
37	EMERGENCY STEERING HANDLE	1	HOT DIPPED GALVANIZED STEEL
36	SKATE	2	RUBBER & ALUM. PLATE
35	RAIL	5	SEA WATER RESISTANT ALUM.
34	FOOD COMPARTMENT	2	F.R.P.
33	OAR/CRUTCH	2	
32	WATER COMPARTMENT	2	F.R.P. WATER TIGHT
31	STEERING GEAR	1	
30	ENGINE & PROPELLER SHAFT	1	
29	STEERING NOZZLE & PROPELLER	1	F.R.P./NIMn-Bronze Cu3-Cu4
28	BATTERIES	2	70AH
27	AXE	2	
26	PILLAR	1	F.R.P.
25			
24	DRAIN PLUG	1	BRASS
23	MANUAL PUMP	1	
22	FIRE EXTINGUISHER	1	
21	FUEL TANK	1	SEA WATER RESISTANT ALUM.
20			
19	SAFETY BELT	1/PERS	
18	EQUIPMENT COMPARTMENT	2	
17	DOOR LATCH	1 LOT	SS316 & PVC SHIELD WIRE ROPE
16	BACK REST	1	PLYWOOD (18MM THK.x400MM H.)
15	CONTROL PANEL	1	
14	SEARCH LIGHT	1	
13	INT. LIGHT	2	
12	HELMS CHAIR	1	F.R.P.
11	PAINTER HOOK	1	HOT DIPPED GALVANIZED STEEL
10	GRIPING BOBBIN	2	HOT DIPPED GALVANIZED STEEL
9	HOOKS DEVICE ARRANGEMENT	2	DIB 125
8	LIFE LINE	2	PVC SHIELD WIRE ROPE
7	REMOTE CONTROL LINE HOLE	1	
6	DOOR, WINDOW & HATCH	1 LOT	
5	BOLLARD	1	SS 316
4	REFLECT LIGHT STRIP	1 LOT	
3	VENTILATOR	4	
2	POSITION LIGHT	1	
1	RADAR REFLECTOR HOLE	1	

NO.	REF. DWG. NO.	DESCRIPTION	QTY.	REMARKS
2		ADD ENGINE TYPE	KARL	PHLI THWA 24.10.2019
1		USE NEW TEMPLATE	KARL	PHLI THWA 19.06.2019

REVISION HISTORY

		VIKING Norsafe Life-Saving Equipment Norway AS P.O. Box 115 4852 Færvik NORWAY Tel: +47 37 05 85 00 Fax: +47 37 05 85 01 24/7 Service: +47 37 05 63 33 Email: Viking-Norsafe@viking-life.com	
Drawn by	Check by	Appr. by	Initial release date
KARL	PHLI	THWA	16.05.2019

Project number	Project name	Client number
Standard		
Title		Material Number
EXTERNAL ARRANGEMENT		
DIB 125		Weight
JYN-115DC		Projection method
Drawing type		Scale
GA		1:30
Drawing Number		Sheet Size
G-503228		A3
Tolerances		Revision
ISO 2768-mK, ISO 13920-BF		2
		Sheet No.
		1/1

48	HYDRAULIC PUMP OR TANK	1	
47	ACCUMULATOR	2	
46	PILOT CONTROLLED VALVE	1	
45	CONTROL PANEL	1	
44	PLUG FOR BATTERY CHARGING	1	IP67
43	VENT FOR BATTERIES	1	SS 316 & PVC HOSE

Due to manufacturing reasons dimensions may vary up to 50mm