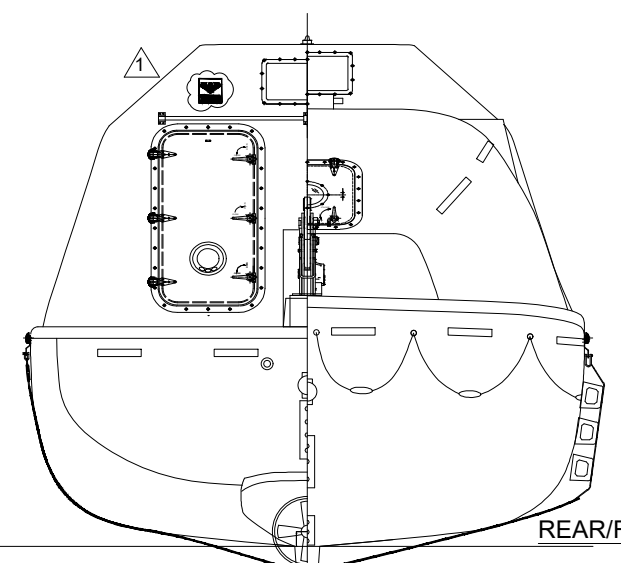
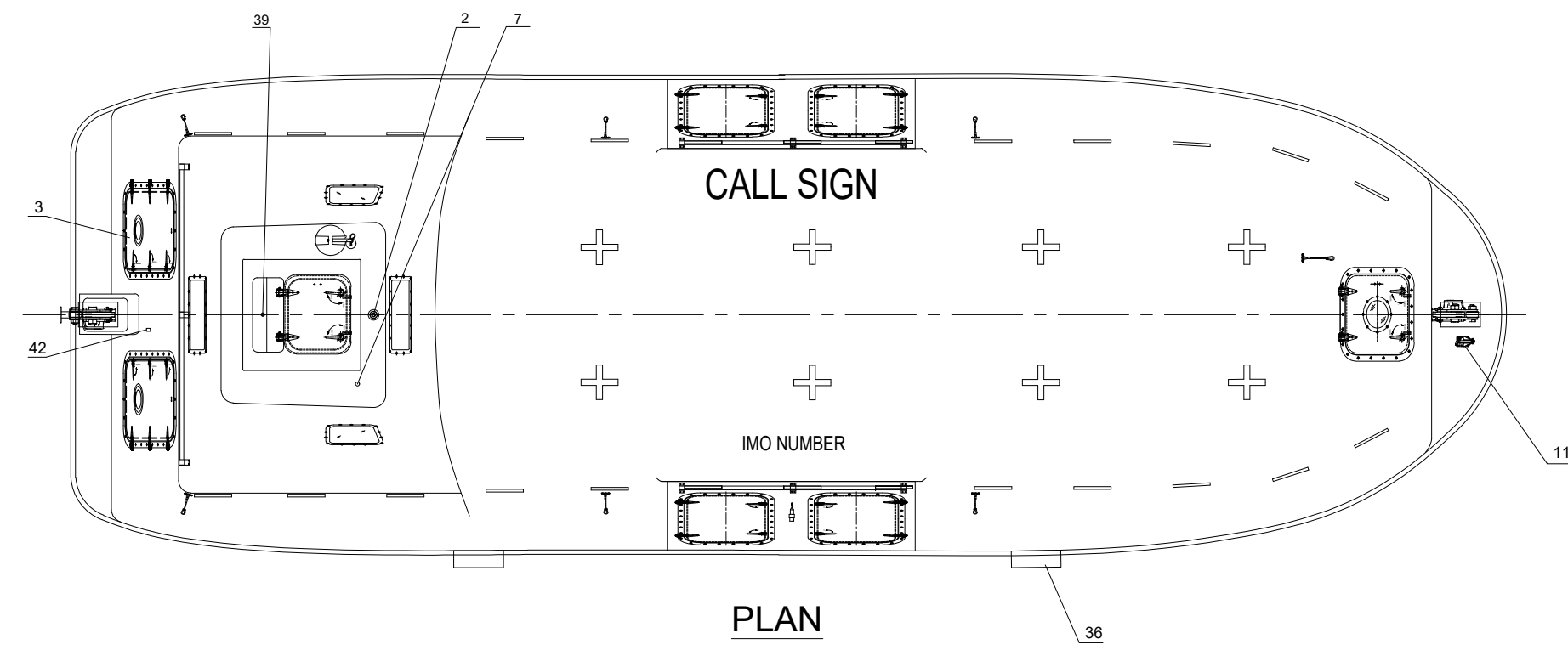


PROFILE



REAR/FRONT VIEW

B.L.



PLAN

NO.	REF. DWG. NO.	DESCRIPTION	QTY.	REMARKS
44		PLUG FOR BATTERY CHARGING	1	IP67
43		VENT FOR BATTERIES	1	SS 316 & PVC HOSE
42		EQUIPMENT SHELF	2	F.R.P.
41		HYDROSTATIC UNIT	1	
40		RELEASE MECHANISM	1	AISI 316
39		RAIN COLLECTION	1	BRASS
38		-		
37		EMERGENCY STEERING HANDLE	1	HOT DIPPED GALVANIZED STEEL
36		SKATE	2	RUBBER & ALUM. PLATE
35		RAIL	5	SEA WATER RESISTANT ALUM.
34		FOOD COMPARTMENT	2	F.R.P.
33		OAR/CRUTCH	2	
32		WATER COMPARTMENT	2	F.R.P. WATER TIGHT
31		STEERING GEAR	1	
30		ENGINE & PROPELLER SHAFT	1	
29		STEERING NOZZLE & PROPELLER	1	F.R.P./NIMn-Bronze Cu3-Cu4
28		BATTERIES	2	70AH
27		AXE	2	
26		PILLAR	1	F.R.P.
25		-		
24		DRAIN PLUG	1	BRASS
23		MANUAL PUMP	1	
22		FIRE EXTINGUISHER	1	
21		FUEL TANK	1	SEA WATER RESISTANT ALUM.
20		-		
19		SAFETY BELT	1/PERS	
18		EQUIPMENT COMPARTMENT	2	
17		DOOR LATCH	1 LOT	SS316 & PVC SHIELD WIRE ROPE
16		BACK REST	1	PLYWOOD (18MM THK.x400MM H.)
15		CONTROL PANEL	1	
14		SEARCH LIGHT	1	
13		INT. LIGHT	2	
12		HELMS CHAIR	1	F.R.P.
11		PAINTER HOOK	1	HOT DIPPED GALVANIZED STEEL
10		GRIPING BOBBIN	2	HOT DIPPED GALVANIZED STEEL
9		HOOKS DEVICE ARRANGEMENT	2	TOR MK2-S 12T
8		LIFE LINE	2	PVC SHIELD WIRE ROPE
7		REMOTE CONTROL LINE HOLE	1	
6		DOOR, WINDOW & HATCH	1 LOT	
5		BOLLARD	1	SS 316
4		REFLECT LIGHT STRIP	1 LOT	
3		VENTILATOR	2	
2		POSITION LIGHT	1	
1		RADAR REFLECTOR	1	

Due to manufacturing reasons dimensions may vary up to 50mm
Port side shown, Starboard side is Mirrored

LENGTH (MOULDED)	11.50m
BREADTH (MOULDED)	3.80m
DEPTH	1.50m
HEIGHT	3.54m
HOOK DIST.	10.96m
NO. OF PERSON	136P
HOOK	TOR MK2-S 12T
CRAFT WEIGHT	8403KG
SPEED	>6 KNOTS
TOTAL WEIGHT	19623KG (82.5Kg/pers)
ENGINE	N485J-3 BUKH BETA 36 EPA

REV	DESCRIPTION	BY	CHECK	APPRO	DATE
1	USE NEW TEMPLATE	KARL	PHLI	THWA	19.06.2019

REVISION HISTORY

VIKING NORSAFE

VIKING Norsafe Life-Saving Equipment Norway AS
P.O Box 115 4852 Færøvik NORWAY
Tel: +47 37 05 85 00
Fax: +47 37 05 85 01
24/7 Service: +47 37 05 63 33
Email: Viking-Norsafe@viking-life.com

Drawn by	Check by	Appr. by	Initial release date
SATA	VX	THWA	16.06.2017

Project number	Project name	Client number
Standard		

Title		Material Number
EXTERNAL ARRANGEMENT		
TOR MK2-S 12T		Weight
JYN-115DC		Projection method

Drawing type	Tolerances	Scale	Sheet Size
GA	ISO 2768-mK, ISO 13920-BF	1:30	A3
Drawing Number	Revision	Sheet No.	
G-502068	1	1/1	