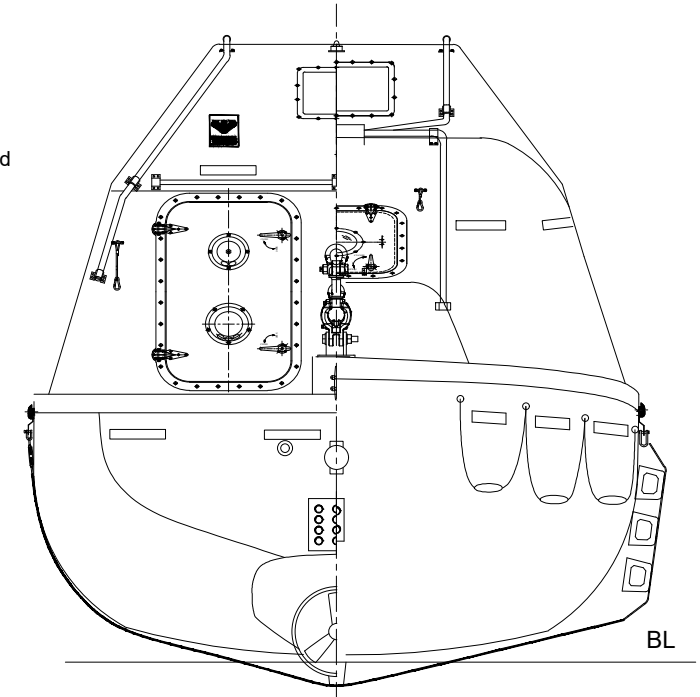
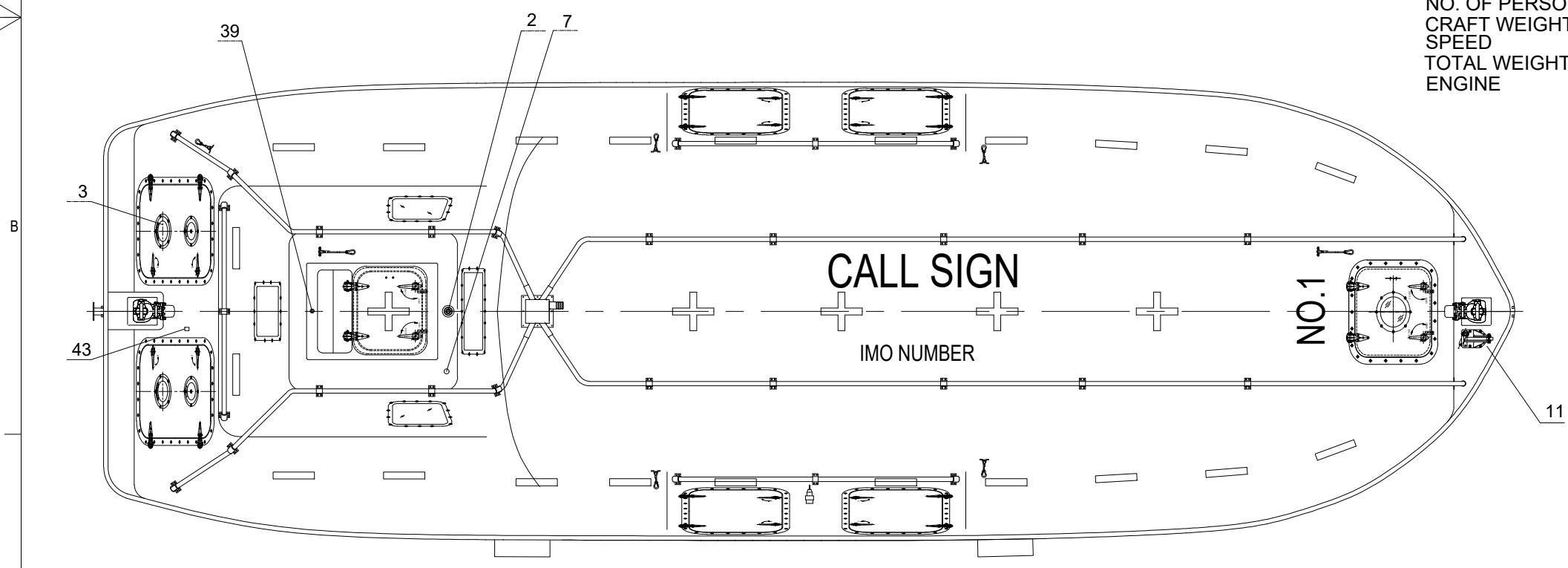


**ELEVATION**



**REAR/FRONT VIEW**

LENGTH (MOULDED) 10.155M  
 BREADTH (MOULDED) 3.25M  
 DEPTH 1.40M  
 TOTAL HEIGHT 3.40M  
 HOOK TYPE DIB 75  
 HOOK DIST. 9.675M  
 NO. OF PERSON 106P  
 CRAFT WEIGHT 5855KG  
 SPEED >6 KNOTS  
 TOTAL WEIGHT 14600KG (82.5Kg/pers)  
 ENGINE 380J-3  
 VETUS M4.55  
 BUKH DV29 RME  
 BUKH 36 EPA



**PLAN**

NO.	REF. DWG. NO.	DESCRIPTION	QTY.	REMARKS
48		HYDRAULIC PUMP OR TANK	1	
47		ACCUMULATOR	1	
46		PILOT CONTROLLED VALVE	1	
45		CONTROL PANEL	1	
44		SOCKET FOR BATTERY CHARGING	1	IP67
43		VENT FOR BATTERIES	1	SS 316 & PVC HOSE
42		EQUIPMENT SHELF	2	F.R.P.
41		WATER SENSOR UNIT	1	
40		EMERGENCY RELEASE VALVE	1	
39		RAIN COLLECTION	1	BRASS
38		SPRINKLE OUTLET/PIPING	1 LOT	AISI 316L
37		EMERGENCY STEERING HANDLE	1	HOT DIPPED GALVANIZED STEEL
36		SKATES	2	RUBBER & ALUM. PLATE
35		RAIL	3	SS316
34		FOOD COMPARTMENT	2	F.R.P.
33		OAR/CRUTCH	2	
32		WATER COMPARTMENT	2	F.R.P. WATER TIGHT
31		STEERING GEAR	1	
30		ENGINE & PROPELLER SHAFT	1	
29		STEERING NOZZLE & PROPELLER	1	F.R.P. / NiMn-Bronze Cu3-Cu4
28		BATTERIES	2	70AH
27		AXE	2	
26		PILLAR	1	F.R.P.
25		SPRINKLE PUMP	1	90-80CBPJ
24		DRAIN FLUS	1	BRASS
23		MANUAL PUMP	1	
22		FIRE EXTINGUISHER	1	
21		FUEL TANK	1	SEA WATER RESISTANT ALUM.
20		AIR CYLINDER	4	
19		SAFETY BELT	1/PERS	
18		EQUIPMENT COMPARTMENT	1 LOT	
17		DOOR LATCH	1 LOT	AISI 316L & PVC SHIELD WIRE ROPE
16		BACK REST	1	PLYWOOD (18MM THK.x400MM H.)
15		CONTROL PANEL	1	
14		SEARCH LIGHT	2	
13		INT. LIGHT	1	
12		HELMS CHAIR	1	F.R.P.
11		4 RT PAINTER HOOK	1	HOT DIPPED GALVANIZED STEEL
10		GRIPPING BOBBIN	2	HOT DIPPED GALVANIZED STEEL
9		HOOKS DEVICE ARRANGEMENT	2	DIB 75
8		LIFE LINE	2	PVC SHIELD WIRE ROPE
7		REMOTE CONTROL LINE HOLE	1 LOT	
6		DOOR WINDOW & HATCH	1 LOT	
5		BOLLARD	1	AISI 316L
4		REFLECT LIGHT STRIP	1 LOT	
3		VENTILATOR	4	
2		POSITION LIGHT	1	
1		RADAR REFLECTOR	1	

1	Use new template	KARL	PHLI	THWA	02/07/2019
REV	DESCRIPTION	BY	CHECK	APPRO	DATE

**REVISION HISTORY**

VIKING Norsafe Life-Saving Equipment Norway AS  
 P.O Box 115 Tel: +47 37 05 85 00  
 4852 Færvik Fax: +47 37 05 85 01  
 NORWAY 24/7 Service: +47 37 05 63 33  
 Email: Viking-Norsafe@viking-life.com

Project number	Project name	Client number
Standard		

Project number	Project name	Client number
Standard		

**EXTERNAL ARRANGEMENT**  
 DIB 75  
 JYN-100T

Material Number	Weight	Projection method

Drawing type	Tolerances	Scale	Sheet Size
GA	ISO 2768-mK, ISO 13920-BF	1:30	A3

Drawing Number	Revision	Sheet No.
G-503172	1	1/1

Due to manufacturing reasons  
 dimensions may vary up to 50mm  
 Port side shown, Starboard side is  
 Mirrored