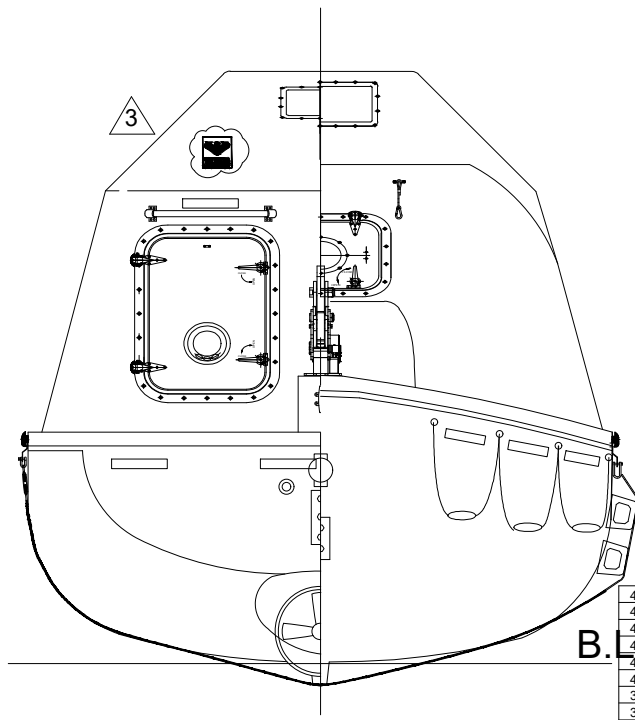
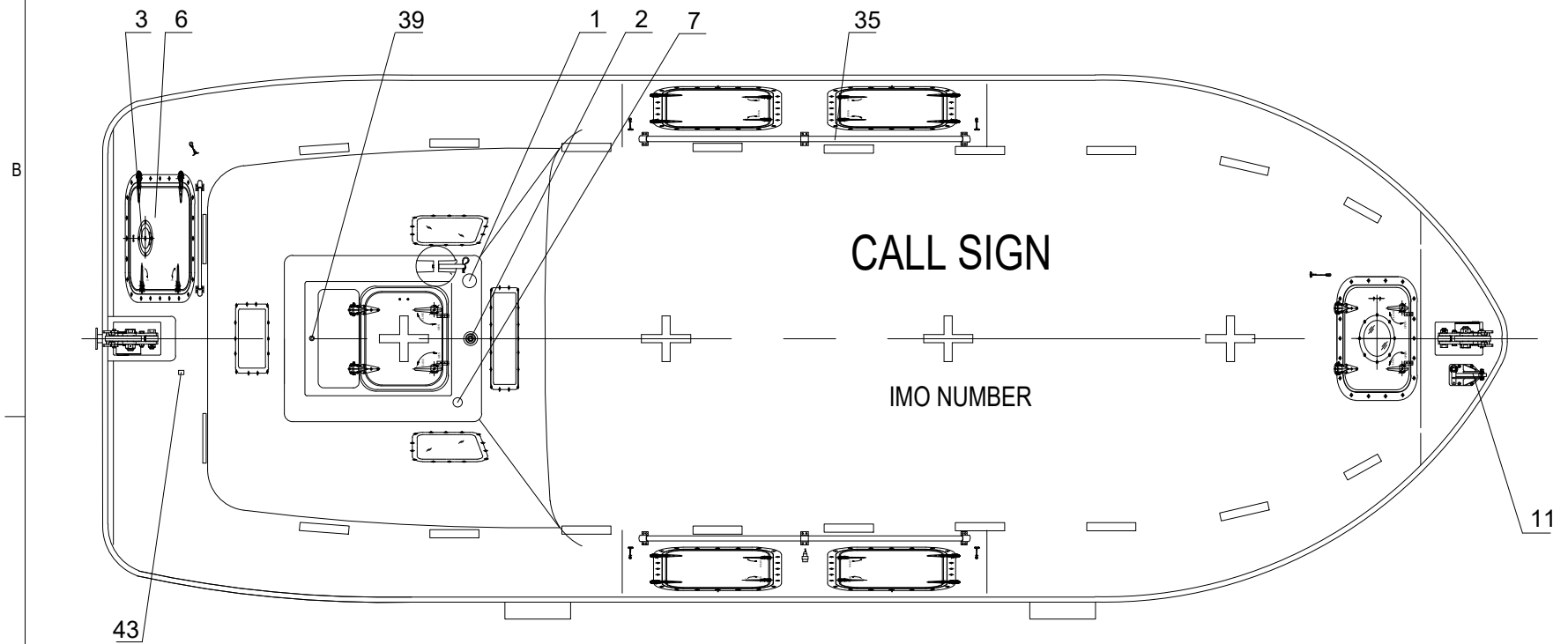


ELEVATION



REAR/FRONT VIEW



PLAN

MAIN PARTICULARS

- LENGTH (MOULDED) 8.50M
- BREADTH (MOULDED) 3.15M
- DEPTH 1.25M
- TOTAL HEIGHT 3.30M
- HOOK DIST 8.00M
- HOOK TYPE TOR MK2-S,9T
- NO. OF PERSON 80P
- CRAFT WEIGHT 4600KG
- SPEED >6 KNOTS
- TOTAL WEIGHT 11200KG (82.5Kg/pers)
- ENGINE 380J-3
- SABB-L3
- BUKH RME-29DV
- BUKH BETA-EPA28
- YANMAR-3JH30A
- VETUS-M4.15

NO.	REF.DWG.NO.	DESCRIPTION	QTY.	REMARKS
45		BRACKET FOR RELEASE CONTROL BOX	1	AISI 316L
44		PLUG FOR BATTERY CHARGER	1	IP67
43		VENT FOR BATTERIES	1	SS316 & PVC HOSE
42		EQUIPMENT SHELF	2	F.R.P.
41		HYDROSTATIC UNIT	1	
40		RELEASE CONTROL BOX	1	AISI 316
39		RAIN COLLECTION	1	BRASS
38				
37		EMERGENCY STEERING HANDLE	1	HOT DIPPED GALVANIZED STEEL
36		SKATE	2	RUBBER & ALUM. PLATE
35		RAIL	2	SEA WATER RESISTANT ALUM.
34		FOOD COMPARTMENT	1	F.R.P.
33		OAR/BOAT HOOK	2	WOOD/PLASTIC
32		WATER COMPARTMENT	3	F.R.P. WATER TIGHT
31		STEERING GEAR	1	
30		ENGINE & PROPELLER SHAFT	1	
29		STEERING NOZZLE & PROPELLER	1	F.R.P. / NIMn-Bronze Cu3-Cu4
28		BATTERIES	2	70AH
27		AXE	2	
26		PILLAR	2	F.R.P.
25			1	
24		DRAIN PLUG	1	BRASS
23		MANUAL PUMP	1	
22		FIRE EXTINGUISHER	1	
21		FUEL TANK	1	SEA WATER RESISTANT ALUM.
20				
19		SAFETY BELT	1/PERS	
18		EQUIPMENT COMPARTMENT	1	
17		DOOR LATCH	1 LOT	SS316 & PVC SHIELD WIRE ROPE
16		BACK REST	1	PLYWOOD (18MM THK.x400MM H.)
15		CONTROL PANEL	1	
14		SEARCH LIGHT	1	
13		INT. LIGHT	2	
12		HELMS CHAIR	1	F.R.P.
11		PAINTER HOOK	1	HOT DIPPED GALVANIZED STEEL
10		GRIPING BOBBIN	2	HOT DIPPED GALVANIZED STEEL
9		HOOKS DEVICE ARRANGEMENT	2	TOR MK2-S,9T
8		LIFE LINE	2	PVC SHIELD WIRE ROPE
7		REMOTE CONTROL LINE HOLE	1	
6		DOOR, WINDOW & HATCH	1 LOT	
5		BOLLARD	1	SS 316
4		REFLECT LIGHT STRIP	1 LOT	
3		VENTILATOR	1	
2		POSITION LIGHT	1	
1		RADAR REFLECTOR	1	

3	USE NEW TEMPLATE	KARL	PHLI	THWA	18.06.2019
2	ADD VETUS M4.15 ENGINE TYPE	SATA	VX	THWA	03.07.2018
1	MODIFY REFLECT LIGHT STRIP	SATA	VX	THWA	26.08.2015
REV	DESCRIPTION	BY	CHECK	APPRO	DATE

REVISION HISTORY

VIKING NORSAFE

VIKING Norsafe Life-Saving Equipment Norway AS
 P.O Box 115 Tel: +47 37 05 85 00
 4852 Færvik Fax: +47 37 05 85 01
 NORWAY 24/7 Service: +47 37 05 63 33
 Email: Viking-Norsafe@viking-life.com

Project number	Project name	Client number	
Standard			
Title		Material Number	
EXTERNAL ARRANGEMENT			
TOR MK2-S 9T		Weight	
JYN-85DC		Projection method	
Drawing type		Tolerances	Scale
GA		ISO 2768-mK, ISO 13920-BF	1:30
Drawing Number		Revision	Sheet Size
G-500924		3	A3
			Sheet No.
			1/1

Due to manufacturing reasons
 dimensions may vary up to 50mm
 Port side shown, Starboard side is
 Mirrored