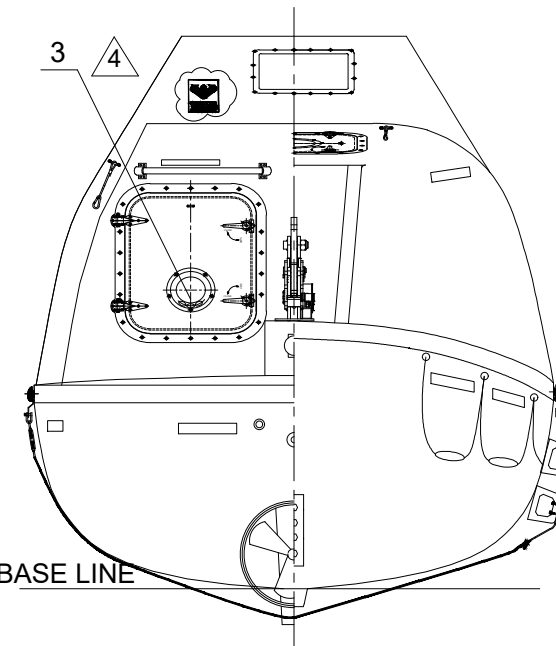
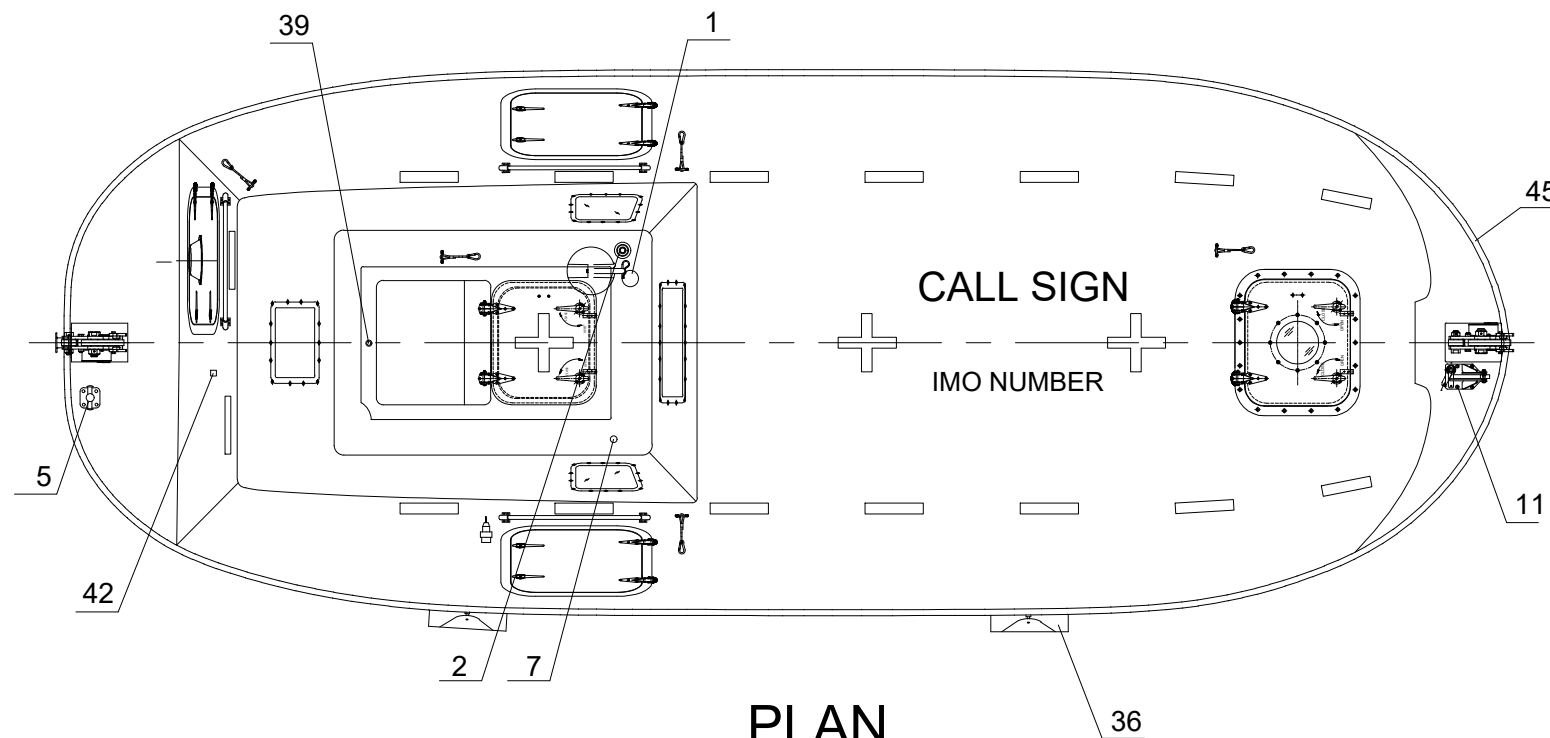


ELEVATION



REAR/FRONT VIEW



PLAN

MAIN PARTICULARS

LENGTH (MOULDED)	7.35M / 7.52M (Including fender)
BREADTH (MOULDED)	2.68M / 2.82M (Including fender)
DEPTH	1.05M
HEIGHT (TOTAL)	3.00M
HOOK DIST	7.00M
NO. OF PERSON	52P
CRAFT WEIGHT	3410KG
SPEED	>6 KNOTS
TOTAL WEIGHT	7700KG (82.5kg/pers)
ENGINE	380J-3 BUKH DV 24 RME BUKH DV 29 RME

NO.	REF.DWG.NO.	DESCRIPTION	QTY.	REMARKS
45		FENDER	4	RUBBER
44		BRACKET FOR RELEASE BOX	1	AISI 316L
43		PLUG FOR BATTERY CHARGING	1	IP67
42		VENT FOR BATTERIES	1	SS 316 & PVC HOSE
41		HYDROSTATIC UNIT	1	
40		RELEASE BOX	1	AISI 316
39		RAIN COLLECTION	1	BRASS
38		-		
37		EMERGENCY STEERING HANDLE	1	HOT DIPPED GALVANIZED STEEL
36		SKATE	2	RUBBER & ALUM. PLATE
35		RAIL	3	SEA WATER RESISTANT ALUM.
34		FOOD COMPARTMENT	1	
33		OAR/CRUTCH	2	WOOD
32		WATER COMPARTMENT	2	F.R.P. WATER TIGHT
31		STEERING GEAR	1	
30		ENGINE & PROPELLER SHAFT	1	
29		STEERING NOZZLE & PROPELLER	1	F.R.P. / NiMn-Bronze Cu3-Cu4
28		BATTERIES	2	70AH
27		AXE	2	
26		PILLAR	1	F.R.P.
25		-		
24		DRAIN PLUG	1	BRASS
23		MANUAL PUMP	1	
22		FIRE EXTINGUISHER	1	
21		FUEL TANK	1	SEA WATER RESISTANT ALUM.
20		-		
19		SAFETY BELT	1/PERS	
18		EQUIPMENT COMPARTMENT	1	
17		DOOR LATCH	1 LOT	SS316 & PVC SHIELD WIRE ROPE
16		BACK REST	1 LOT	PLYWOOD (18MM THK.x400MM H.)
15		CONTROL PANEL	1	
14		SEARCH LIGHT	1	
13		INT. LIGHT	2	
12		HELMS CHAIR	1	F.R.P.
11		PAINTER HOOK	1	GALV. STEEL
10		GRIPING BOBBIN	2	HOT DIPPED GALVANIZED STEEL
9		HOOKS DEVICE ARRANGEMENT	2	TOR MK2-S.6T
8		LIFE LINE	2	PVC SHIELD WIRE ROPE
7		REMOTE CONTROL LINE HOLE	1	
6		DOOR	1 LOT	
5		BOLLARD	1	SS 316
4		REFLECT LIGHT STRIP	1 LOT	
3		VENTILATOR	1	
2		POSITION LIGHT	1	
1		RADAR REFLECTOR	1	

REV	DESCRIPTION	BY	CHECK	APPRO	DATE
4	USE NEW TEMPLATE	KARL	PHLI	THWA	12.06.2019
3	ADDED RAIL FOR AFT DOOR	SATA	VX	THWA	23.03.2016
2	UPDATED ENGINE TYPES	SATA	VX	THWA	01.12.2015
1	SPECIFIED THE ENGINE TYPE	SATA	VX	THWA	24.07.2015

REVISION HISTORY

VIKING NORSAFE LIFE-SAVING EQUIPMENT

VIKING Norsafe Life-Saving Equipment Norway AS
P.O Box 115 4852 Færøvik NORWAY
Tel: +47 37 05 85 00 Fax: +47 37 05 85 01
24/7 Service: +47 37 05 63 33
Email: Viking-Norsafe@viking-life.com

Drawn by: SATA, Check by: VX, Appr. by: THWA, Initial release date: 07.09.2015

Project number	Standard	Project name	Client number
Title		Material Number	
EXTERNAL ARRANGEMENT		Weight	
TOR MK2-S 6T		Projection method	
JYN-74DC			
Drawing type	GA	Tolerances	ISO 2768-mK, ISO 13920-BF
Drawing Number	G-500911	Scale	1:30
		Sheet Size	A3
		Revision	4
		Sheet No.	1/1

Due to manufacturing reasons dimensions may vary up to 50mm
Port side shown, Starboard side is Mirrored