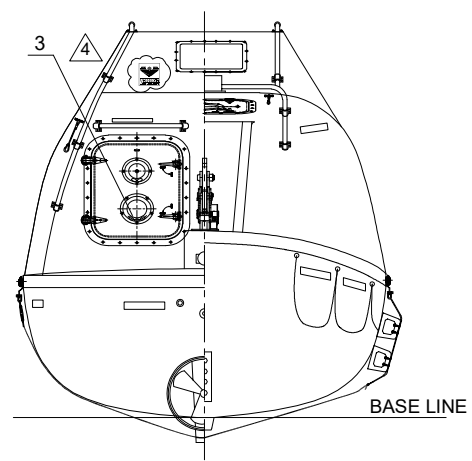
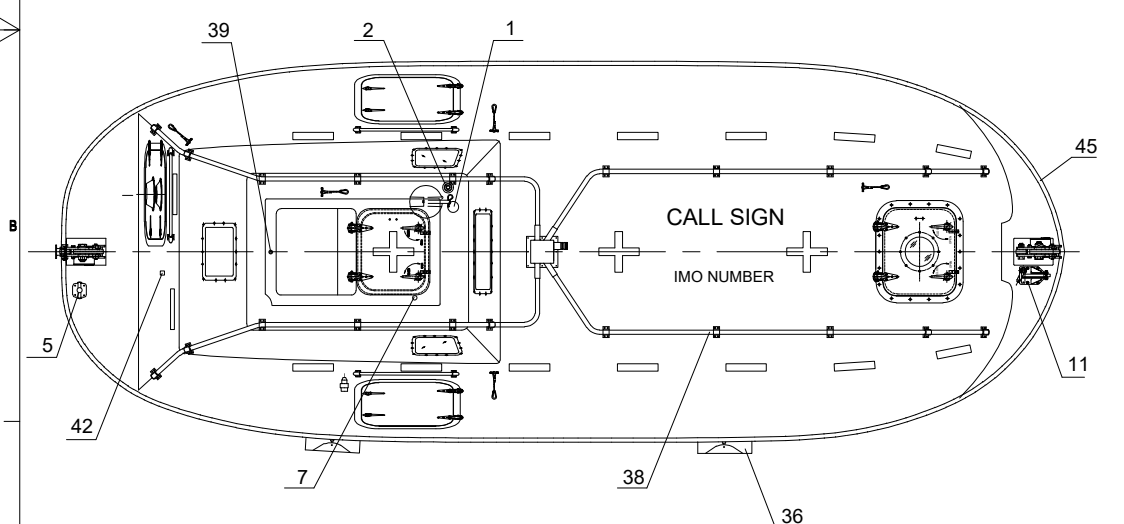


ELEVATION



REAR/FRONT VIEW



PLAN

MAIN PARTICULARS

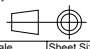
LENGTH (MOULDED)	7.35M / 7.52M (Including fender)
BREADTH (MOULDED)	2.68M / 2.82M (Including fender)
DEPTH	1.05M
HEIGHT (TOTAL)	3.00M
HOOK DIST	6.96M
NO. OF PERSON	52P
CRAFT WEIGHT	3410KG
SPEED	>6 KNOTS
TOTAL WEIGHT	7700KG (82.5kg/pers)
ENGINE	380J-3 BUKH DV 24 RME BUKH DV 29 RME

45	FENDER	4	RUBBER
44	BRACKET FOR RELEASE BOX	1	AISI 316L
43	PLUG FOR BATTERY CHARGING	1	IP67
42	VENT FOR BATTERIES	1	SS 316 & PVC HOSE
41	HYDROSTATIC UNIT	1	
40	RELEASE BOX	1	AISI 316
39	RAIN COLLECTION	1	BRASS
38	SPRINKLER OUTLET/PIPING	1 LOT	SEA WATER RESISTANT ALLUM.
37	EMERGENCY STEERING HANDLE	1	HOT DIPPED GALVANIZED STEEL
36	SKATE	2	RUBBER & ALLUM. PLATE
35	RAIL	3	SEA WATER RESISTANT ALLUM.
34	FOOD COMPARTMENT	1	
33	CARGO CRUTCH	2	
32	WATER COMPARTMENT	2	F.R.P. WATER TIGHT
31	STEERING GEAR	1	
30	ENGINE & PROPELLER SHAFT	1	
29	STEERING NOZZLE & PROPELLER	1	F.R.P./MMn-Bronze Cu3-Cu4
28	BATTERIES	2	70AH
27	AXE	2	
26	PILLAR	2	F.R.P.
25	SPRINKLE SYSTEM	1 LOT	
24	DRAIN PLUG	1	BRASS
23	MANUAL PUMP	1	
22	FIRE EXTINGUISHER	1	
21	FUEL TANK	1	SEA WATER RESISTANT ALLUM.
20	AIR SUPPLY SYSTEM	1 LOT	
19	SAFETY BELT	1/PERSON	
18	EQUIPMENT COMPARTMENT	1	
17	DOOR LATCH	1 LOT	SS316 & PVC SHIELD WIRE ROPE
16	BACK REST	1 LOT	PLYWOOD (18MM THK.x400MM H.)
15	CONTROL PANEL	1	
14	SEARCH LIGHT	1	
13	INT. LIGHT	2	
12	HELMS CHAIR	1	F.R.P.
11	PAINTER HOOK	1	HOT DIPPED GALVANIZED STEEL
10	GRIPING BOBBIN	2	HOT DIPPED GALVANIZED STEEL
9	HOOBS DEVICE ARRANGEMENT	2	TOR MK2-S.6T
8	LIFE LINE	2	PVC SHIELD WIRE ROPE
7	REMOTE CONTROL LINE HOLE	1	
6	DOOR	1 LOT	
5	BOLLARD	1	SS 316
4	REFLECT LIGHT STRIP	1 LOT	
3	VENTILATOR	2	
2	POSITION LIGHT	1	
1	RADAR REFLECTOR	1	

NO.	REF. DWG. NO.	DESCRIPTION	QTY.	REMARKS
4		USE NEW TEMPLATE	KARL PHU THWA	12.08.2016
3		ADDED RAIL FOR AFT DOOR	SATA VX THWA	23.03.2016
2		UPDATED ENGINE TYPES	SATA VX THWA	01.12.2015
1		SPECIFIED THE ENGINE TYPE	SATA VX THWA	24.07.2015

REVISION HISTORY


VIKING NORSAFE
 VIKING Norsafe Life-Saving Equipment Norway AS
 P.O. Box 115 4652 Farnvik NORWAY
 Tel: +47 37 05 85 00 Fax: +47 37 05 85 01
 24/7 Service: +47 37 05 83 33 Email: Viking-Norsafe@viking-nifs.com

Project number	Project name	Client number
Standard		
Title		Material Number
EXTERNAL ARRANGEMENT		Weight
TOR MK2-S 6T		Projection method
JYN-74T		
Drawing type	Tolerances	Scale
GA	ISO 2768-mK, ISO 13920-BF	1:30
Drawing Number		Sheet Size
G-500909		A3
		Revision
		4
		Sheet No.
		1/1

Due to manufacturing reasons dimensions may vary up to 50mm Port side shown, Starboard side is Mirrored