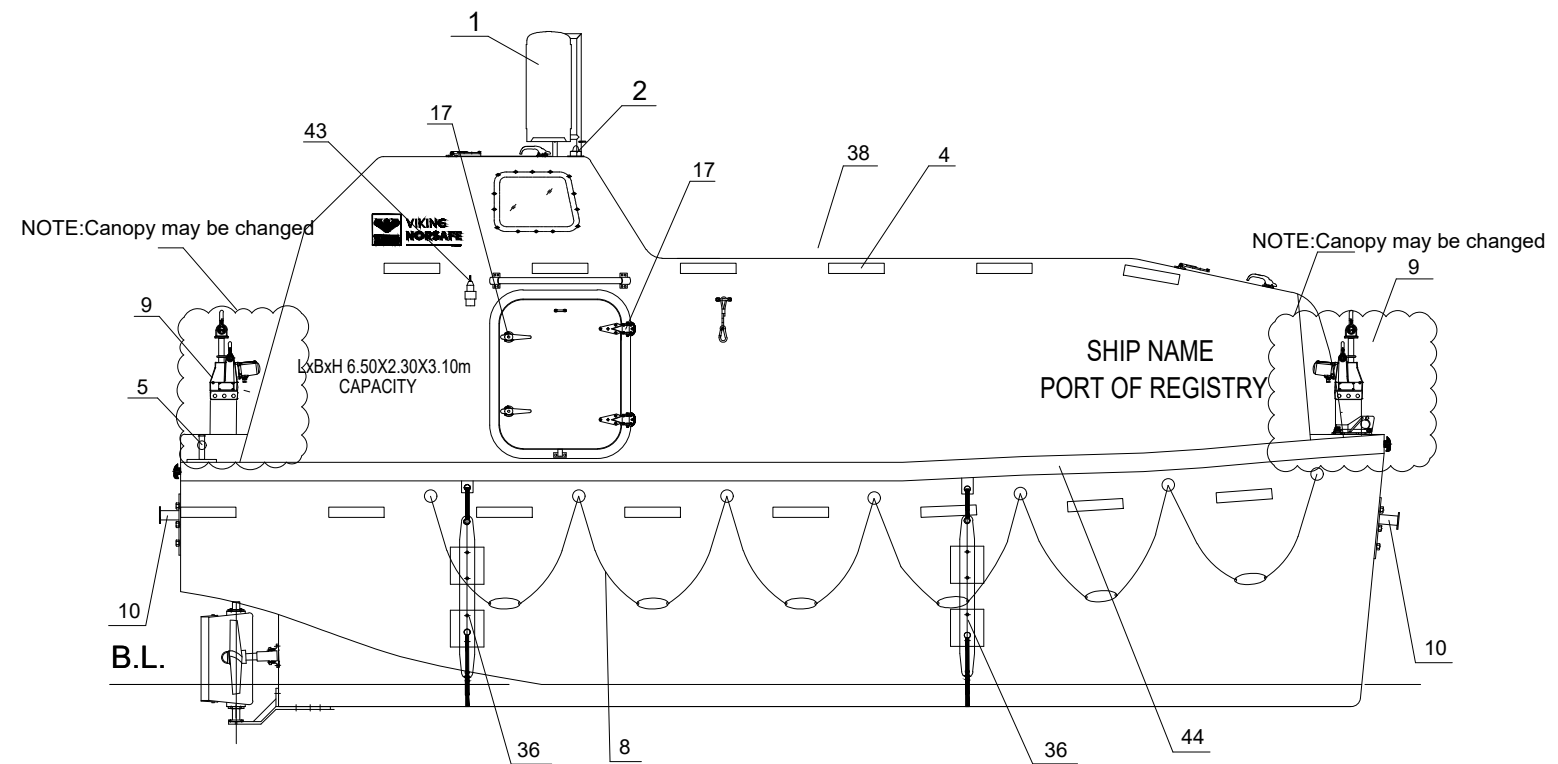


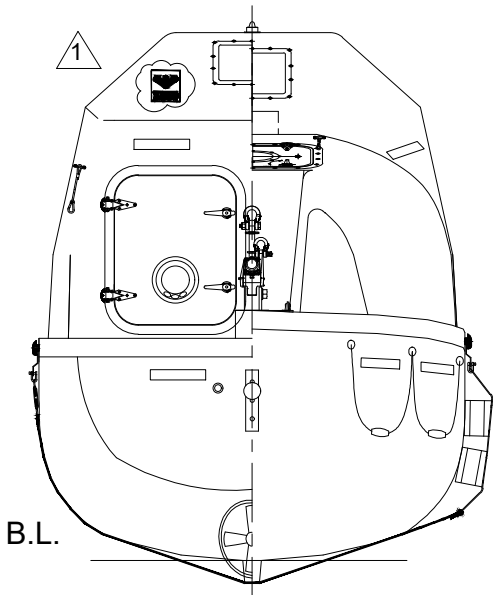
6 5 4 3 2 1

D

D



**ELEVATION**



**PRINCIPAL DIMENSIONS**

LENGTH (MOULDED)	6.50m
BREADTH (MOULDED)	2.30m
HEIGHT	3.10m
DEPTH MOULDED	1.20m
HOOK DIST	6.10m
HOOK TYPE	NADIRO DIB 32
CAPACITY	35 PERSONS
WEIGHT OF BOAT WITH EQUIPMENT	3012Kg
WEIGHT OF BOAT WITH PERSONS	5900Kg (82,5kg/pers)
SPEED	>6Kn
ENGINE	380J-3

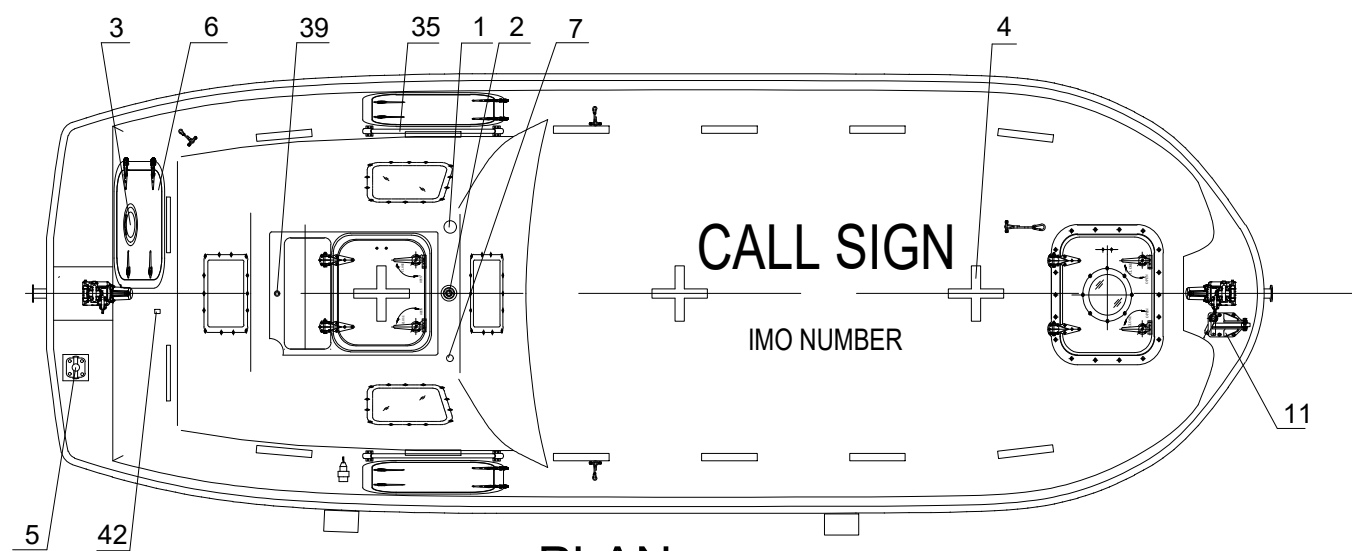
C

C

45	ACCUMULATOR	1		
44	FENDER	1	PVC	
43	PLUG FOR BATTERY CHARGER	1	IP67	
42	VENT FOR BATTERIES	1	SS316 & PVC HOSE	
41	WATER SENSOR UNIT	1		
40	EMERGENCY RELEASE VALVE	1	AISI 316	
39	RAIN COLLECTION	1	BRASS	
38				
37	EMERGENCY STEERING HANDLE	1	HOT DIPPED GALVANIZED STEEL	
36	SKATE	2	RUBBER & ALUM. PLATE	
35	RAIL	2	SEA WATER RESISTANT ALUM.	
34	FOOD COMPARTMENT	1	F.R.P.	
33	OAR/BOAT HOOK	2	WOOD/PLASTIC	
32	WATER COMPARTMENT	3	F.R.P. WATER TIGHT	
31	STEERING GEAR	1		
30	ENGINE & PROPELLER SHAFT	1		
29	STEERING NOZZLE & PROPELLER	1	F.R.P. / NiMn-Bronze Cu3-Cu4	
28	BATTERIES	2	70AH	
27	AXE	2		
26	PILLAR			
25		1	90-80CBPJ	
24	DRAIN PLUG	1	BRASS	
23	MANUAL PUMP	1		
22	FIRE EXTINGUISHER	1		
21	FUEL TANK	1	SEA WATER RESISTANT ALUM.	
20				
19	SAFETY BELT	1/PERS		
18	EQUIPMENT COMPARTMENT	1		
17	DOOR LATCH	1 LOT	SS316 & PVC SHIELD WIRE ROPE	
16	BACK REST	1	PLYWOOD (18MM THKx400MM H.)	
15	CONTROL PANEL	1		
14	SEARCH LIGHT	1		
13	INT. LIGHT	2		
12	HELMS CHAIR	1	F.R.P.	
11	PAINTER HOOK	1	HOT DIPPED GALVANIZED STEEL	
10	GRIPING BOBBIN	2	HOT DIPPED GALVANIZED STEEL	
9	HOOKS DEVICE ARRANGEMENT	2	NADIRO DIB 32	
8	LIFE LINE	2	PVC SHIELD WIRE ROPE	
7	REMOTE CONTROL LINE HOLE	1		
6	DOOR, WINDOW & HATCH	1 LOT		
5	BOLLARD	1	SS 316	
4	REFLECT LIGHT STRIP	1 LOT		
3	VENTILATOR	1		
2	POSITION LIGHT	1		
1	RADAR REFLECTOR	1		
NO.	REF.DWG.NO.	DESCRIPTION	QTY.	REMARKS

B

B



**PLAN**

Due to manufacturing reasons  
dimensions may vary up to 50mm  
Port side shown, Starboard side is  
Mirrored

A

A

1	USE NEW TEMPLATE	KARL	PHLI	THWA	01.07.2019
REV	DESCRIPTION	BY	CHECK	APPRO	DATE

**REVISION HISTORY**

**VIKING NORSAFE**

VIKING Norsafe Life-Saving Equipment Norway AS  
P.O.Box 115 4852 Færvik NORWAY  
Tel: +47 37 05 85 00 Fax: +47 37 05 85 01  
24/7 Service: +47 37 05 63 33  
Email: Viking-Norsafe@viking-life.com

Project number	Project name	Client number
Standard		

Title		Material Number	
<b>EXTERNAL ARRANGEMENT</b>			
<b>DIB 32</b>		Weight	
<b>JYN-65DC</b>		Projection method	
Drawing type		Scale	
GA		1:40	
Tolerances		Sheet Size	
ISO 2768-mK, ISO 13920-BF		A3	
Drawing Number		Revision	
G-503127		1	
		Sheet No.	
		1/1	

47	OPERATION PANEL	1	
46	HYDRAULIC PUMP OR TANK	1	

6 5 4 3 2 1