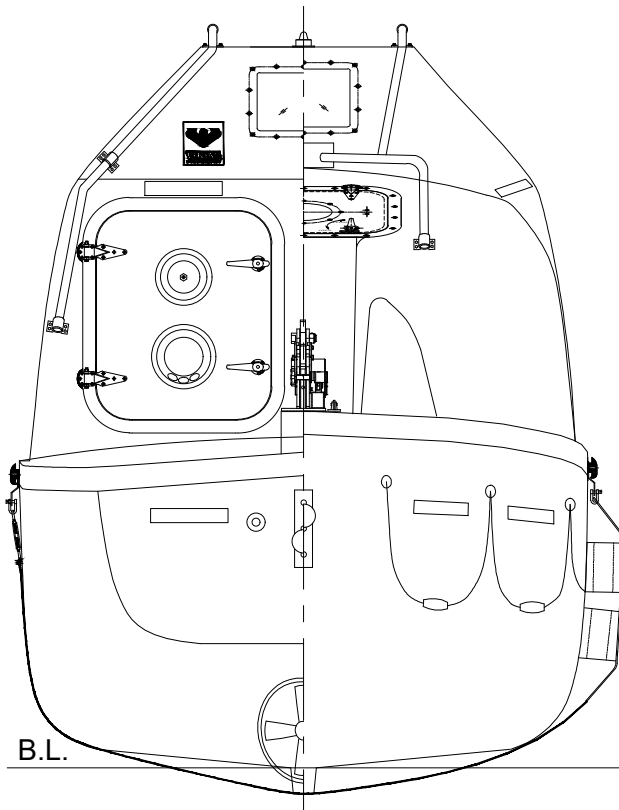
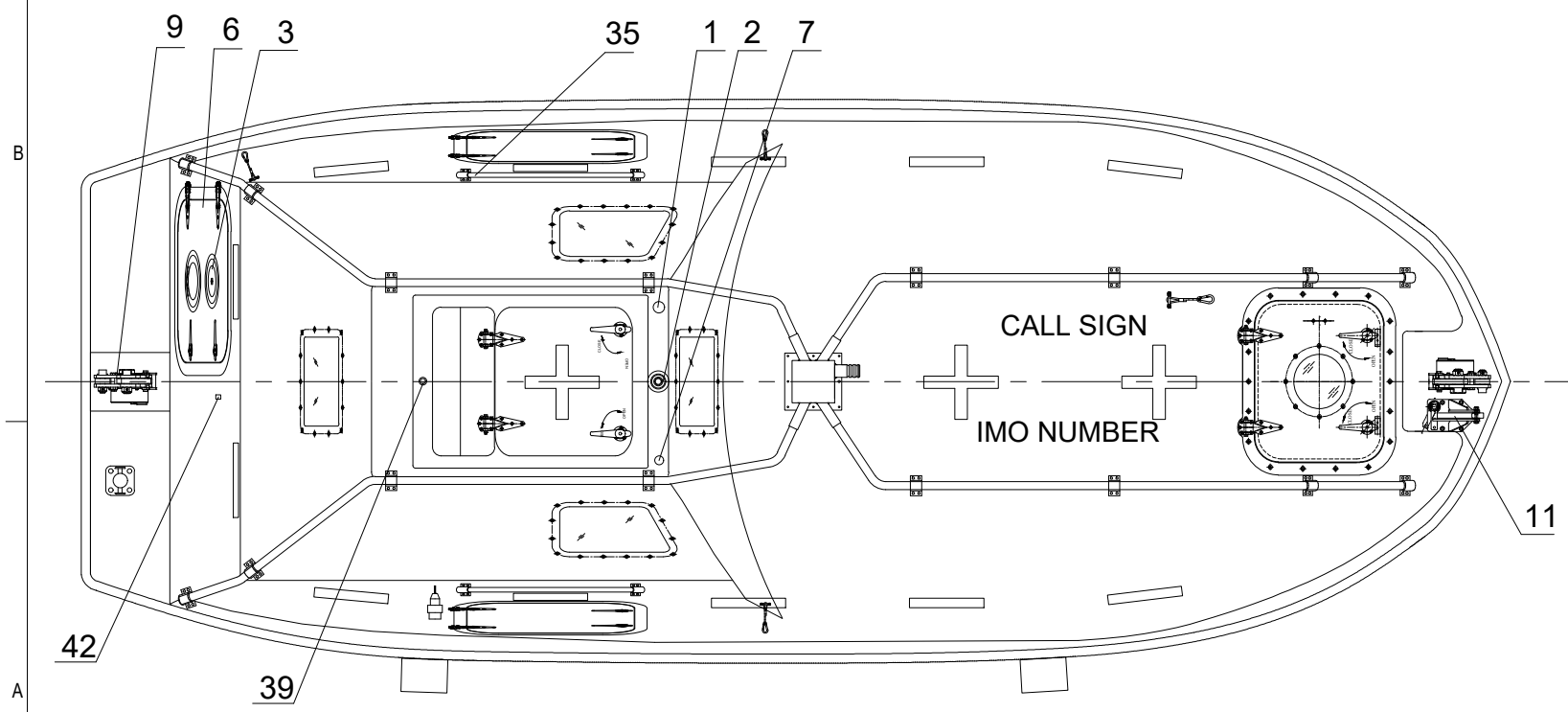


ELEVATION



REAR/FRONT VIEW



PLAN

MAIN PARTICULARS

LENGTH (MOULDED)	5.70M
BREATH (MOULDED)	2.20M
DEPTH	1.20M
HOOK DIST	5.30M
NO. OF PERSON	26P
CRAFT WEIGHT	2705KG
SPEED	>6Kn
TOTAL WEIGHT	4850KG (82.5Kg/pers)
ENGINE	380J-3

NO.	REF.DWG.NO.	DESCRIPTION	QTY.	REMARKS
43		PLUG FOR BATTERY CHARGING	1	IP67
42		VENT FOR BATTERIES	1	SS 316 & PVC HOSE
41		HYDROSTATIC UNIT	1	
40		RELEASE MECHANISM	1	AISI 316
39		RAIN COLLECTOR	1	BRASS
38		SPRINKLE OUTLET/ PIPING	1 LOT	SS316
37		EMERGENCY STEERING HANDLE	1	HOT DIPPED GALVANIZED STEEL
36		SKATE	2	RUBBER & ALUM.
35		RAIL	2	SEA WATER RESISTANT ALUM.
34		FOOD COMPARTMENT	1	F.R.P.
33		OAR/CRUTCH	2	WOOD
32		WATER CABIN	2	F.R.P.WATER-RESISTANT
31		STEERING GEAR	1	
30		ENGINE & PROPELLER SHAFT	1	
29		STEERING NOZZLE & PROPELLER	1	F.R.P./NiMn-Bronze Cu3-Cu4
28		BATTERIES	2	70AH
27		AXE	2	
26		PILLAR	1	
25		SPRINKLE PUMP	1	
24		DRAIN PLUG	1	BRASS
23		MANUAL PUMP	1	
22		FIRE EXTINGUISHER	1	
21		FUEL TANK	1	SEA WATER RESISTANT ALUM.
20		AIR CYLINDER	3	
19		SAFETY BELT	1/PERS	
18		EQUIPMENT COMPARTMENT	2	
17		DOOR LATCH	1 LOT	SS316 & PVC SHIELD WIRE ROPE
16		BACK REST	1	PLYWOOD
15		CONTROL PANEL	1	
14		SEARCH LIGHT	1	
13		INT. LIGHT	2	
12		PILOT CHAIR	1	F.R.P.
11		PAINTER HOOK	1	HOT DIPPED GALVANIZED STEEL
10		GRIPING BOBBIN	2	HOT DIPPED GALVANIZED STEEL
9		HOOKS DEVICE ARRANGEMENT	2	TOR-MK2-S 3.36T
8		LIFE LINE	2	
7		REMOTE CONTROL LINE HOLE	1	
6		DOOR	1 LOT	
5		BOLLARD	1	SS 316
4		REFLECT LIGHT STRIP	1 LOT	
3		VENTILATOR	2	
2		POSITION LIGHT	1	
1		RADAR REFLECTOR	1	

REV	DESCRIPTION	BY	CHECK	APPRO	DATE
3	SPECIFIED THE ENGINE TYPE	KARL	STHU	THWA	25.02.2021
2	USE NEW TEMPLATE	KARL	THWA	TMA	12.06.2019
1	SPECIFIED THE ENGINE TYPE	VX	THWA	TMA	16.07.2015

REVISION HISTORY

		VIKING Norsafe Life-Saving Equipment Norway AS P.O.Box 115 4852 Færvik NORWAY Tel: +47 37 05 85 00 Fax: +47 37 05 85 01 24/7 Service: +47 37 05 63 33 Email: Viking-Norsafe@viking-life.com	
Project number	Project name	Client number	
STANDARD			
Title		Material Number	
EXTERNAL ARRANGEMENT		Weight	
TOR MK2-S 3.36T		0,0 kg	
JYN-57T		Projection method	
Drawing type	Tolerances	Scale	Sheet Size
GA	ISO 2768-mK, ISO 13920-BF	1:1	A3
Drawing Number		Revision	Sheet No.
G-500787		3	1/1

Due to manufacturing reasons dimensions may vary up to 50mm
 Port side shown, Starboard side is Mirrored