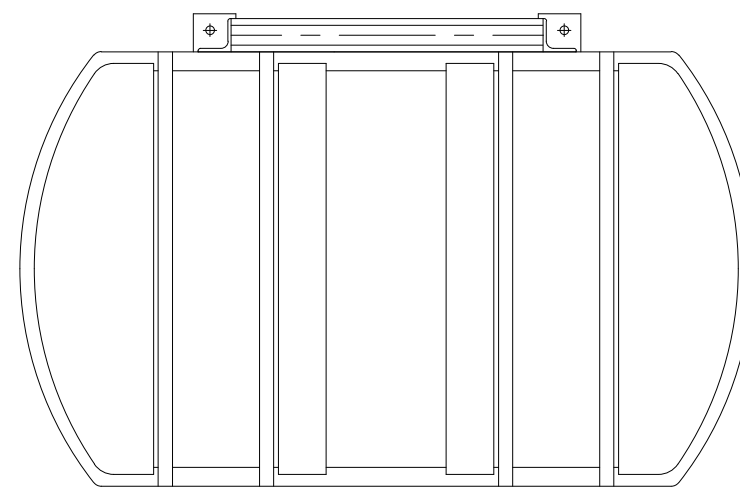


Holder for service pipe
Place service pipe in holder
while life raft is being lashed.



Measure are for guidance only
In case VIKING does not manufacture the
cradle, VIKING will not be held responsible
for construction, dimensioning and choice
of material for the rack.

1007104	0181	DKS 50 "B"	1003994
-	0139	DKS 50 "B"	1003994
1003514	0129	DKR (2X50)	-
1011038	8701	DKS 50 "B"	-
1008831	8601	DKS 25 A+B	1021509
1010634	8401	DKF 35 "A"	-
-	8300	DKFS 39 "A"	1036173
-	8300	DKF 35 "A"	1036173
1011913	8200	DKF 35 "B"	-
1008299	5702	DK 35 "A"	1003994
1012039	5701	DKS 50 "B"	1003994
1005720	5700	DKR 100	1003994
1005720	5700	IBA 100	1003994
1005169	5200	DK 25 "A"	-
1005169	5200	DKR 50	-
1005169	5200	IBA 50	-
Container Part no.:	Container type.:	Description:	Lashing arr.

RACK CAN BE DELIVERED AS:
1003987 SANDBLASTED AND PRIMED
1015749 COSTUMER SPECIFIC RAL
1015750 GALVANIZED
1015751 STANDARD RAL 9010

01	Add material no./Update container shape	DW	PSOM	ASU	17-06-22
Rev	Reason for Issue	By	Check	Appro	Date
1	1	Rack			See Table
POS	QTY	DESCRIPTION			MATERIAL NO.
PARTLIST					
REPLACES: 42002213					
		VIKING Life-Saving Equipment A/S Sædding Ringvej 13 Tel: +45 7611 8100 DK-6710 Esbjerg V Fax: +45 7611 8101 Denmark Email: viking@viking-life.com			
		Drawn by	Check by	Appr. by	Initial release date
Project number		Project name		Client number	
Title				Material Number	
General arrangement for rack				Various No.	
for 1 pcs. life raft container				Weight	
				52 kg.	
				Projection method	
Drawing type		Tolerances		Scale	
ASM				1:16	
Drawing Number				Revision	
ENG-20101402				0	
				Sheet Size	
				A3	
				Sheet No.	
				1/1	

