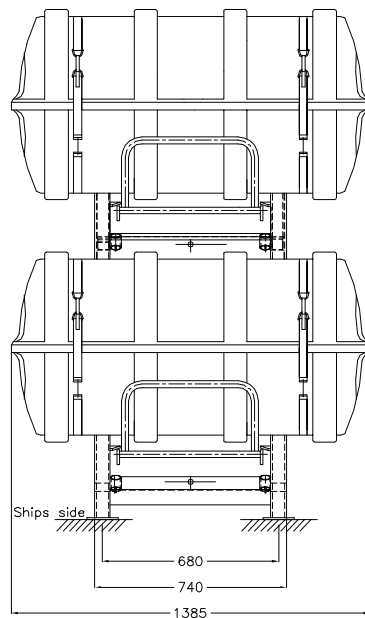
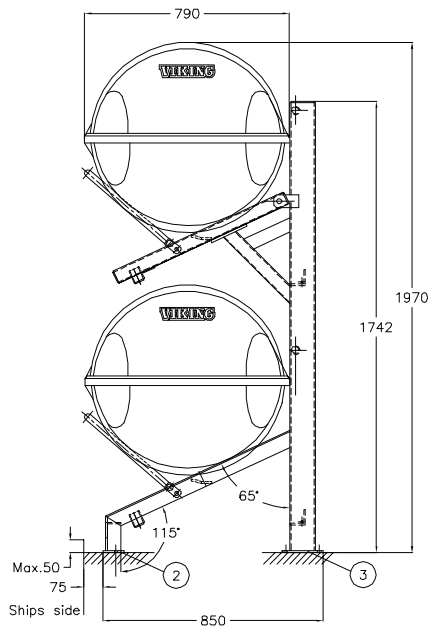
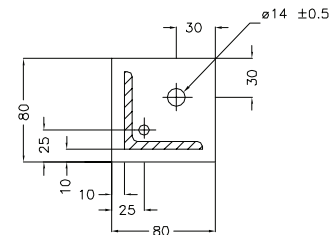


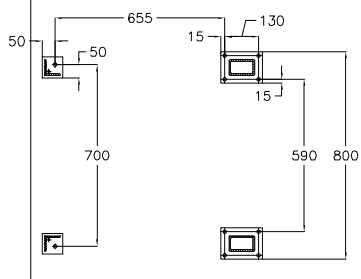
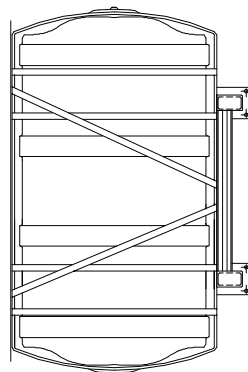
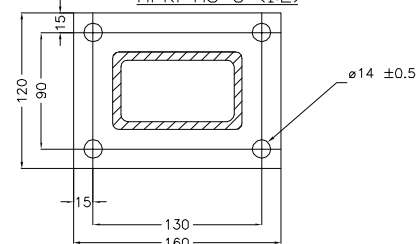
First angle projection



Mrk. no 2 (1:2)



Mrk. no 3 (1:2)



016-6100	DK 12 A	1015784
016-0114	DKF 12 A	1015780
016-5200	DK 25 A	1015784
016-6000	DK 25 B	1015784
016-8601	DKS 25 A+B	1015784
016-8500	DKFS 25	1015780
016-8100	DKF 25	1015780
016-8000	DKF 16-20	1015780
016-6000	DK 20 A	1015784
016-5200	DKR 50	1015784
016-5100	DK 16	1015784
Container Part no.:	Description:	Lashing:

In case VIKING does not manufacture the cradle, VIKING will not be held responsible for construction, dimensioning and choice of material for the rack.

Weight: app.110 kg
Old no. 052-6051
Item no. 1011805

5	20.03.12/LRW/MS
5664/M	12.03.08/MHC/MS
5612/E	24.11.06/LRW/MS
#/50365	12.03.01 AR
/1533S	29.09.00 ENG
Issue/Ref. no.	Date: Check:

2	Plate 160x120x8	3		S. #1-375-2	
2	Plate 80x80x8	2		S. #1-375-2	
1	Rack	1	834-015-2	S. #1-375-2	
Mrk.	Object	Num.	Draw no.	Material	Part no.
Copyright of VIKING LIFE-SAVING EQUIPMENT, DENMARK, whose property this document remains. Its part thereof may be disclosed, copied, duplicated or in any other way made use of, except with the approval of VIKING LIFE-SAVING EQUIPMENT, DENMARK.					
P.O. Box 3360 6710 Esbjerg V Denmark		Scale: 1:10	Dim. in: mm	Drawn: 03.09.98. MS	Check: 03.09.98. CJ
Arrangement drawing for Rack 2 pcs. Liferaft containers				Drawing no.: 834-0165-2	
				CAD Nr.: 8340162	

