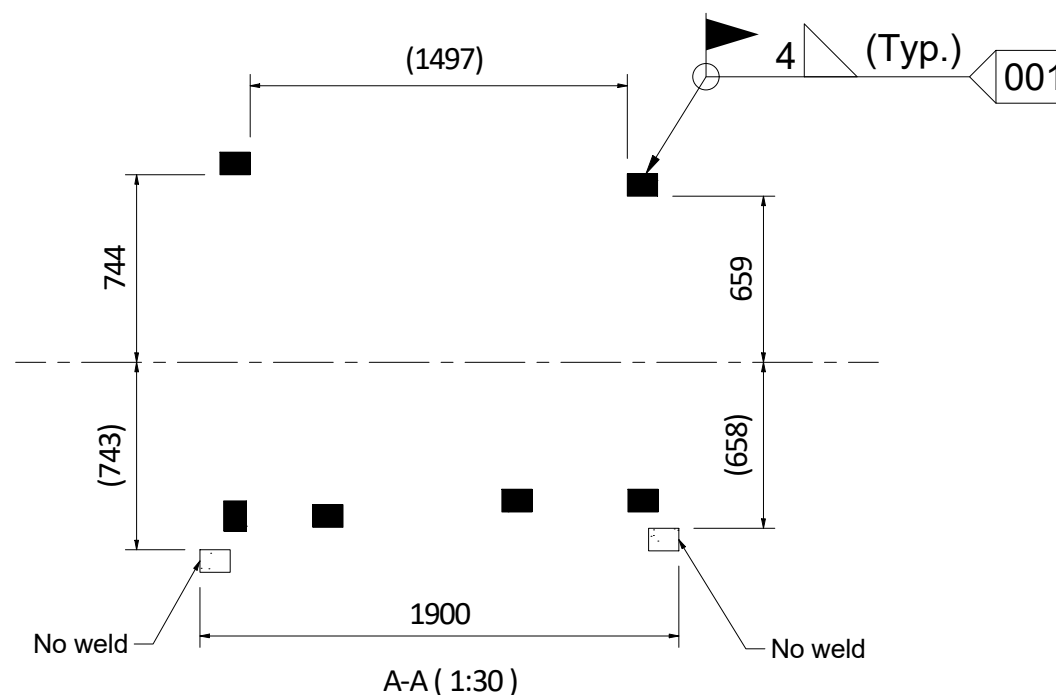
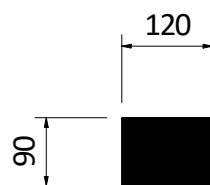


**Boat on port side of ship**

WELDING INFORMATION					
Build No:					
WELD NO.	JOINT	THROAT THICKN.	INSPECT. CAT.	WELD LENGTH	COMMENTS
001	△	<10	C	2520	

**Foot Print Detail**



**Notes:**

1. All edges to be rounded.
2. Welds to be made by persons certified to following standards or similar: ISO 9606 (EN 287) Part 1.
3. NDT inspection according to Norsok M-101.
4. Tilt angle should be according to different engine model, dimension shown is the Max size.
5. This welding drawing will be used for Vessel's camber which less than 3 degree.

REV	REASON FOR ISSUE	BY	CHECK	APPRO	DATE
2	Updated dimensions	GACA	PHLI	GACA	03.08.2020
1	Update the template and add dimension	EVJI	PHLI	THWA	21.08.2019

	VIKING Norsafe Life-Saving Equipment Norway AS P.O Box 115 Tel: +47 37 05 85 00 4852 Færвик Fax: +47 37 05 85 01 NORWAY 24/7 Service: +47 37 05 63 33 Email: Viking-Norsafe@viking-life.com			
	Drawn by	Check by	Appr. by	Initial release date
PHLI	JKJI	THWA	16/02/2017	

Project number	Project name	Client number
Title		Material Number
Deck cradle footprint		Weight
Collapsible, Portside		88.0 kg
Matrix-450 MKI		Projection method
Drawing type		Scale
RED		1:30
Drawing Number		Sheet Size
R-502010		A3
Tolerances		Revision
ISO 2768-mK, ISO 13920-BF		2
Sheet No.		1/1