



# VIKING Firefighter Jacket

## PS1122

DATE 21/09/2022 - EDITION 3



Chest size:  
S, M, L, XL, XXL, 3XL, 4XL, 5XL

Length of coat:  
30" or 32"

Sleeve size:  
Regular

VIKING LIFE-SAVING EQUIPMENT

VIKING-FIRE.COM

### Single color



#### PBI Max 6.0™ 6.0 osy

80 Gold



#### PBI Max 7.0™ 7.0 osy

50 Black



80 Gold



#### Tencate Pioneer™ 6.6 osy

01 Yellow



50 Black



80 Gold



83 Light Gold



85 Khaki



#### Viking IQ 6.5 osy

01 Yellow



10 Orange



20 Red



31 Dark navy blue



80 Gold



#### VIKING LC 6.5 osy

01 Yellow



10 Orange



20 Red



31 Dark navy blue



80 Gold



#### Kombat flex 6.9 osy

80 Gold

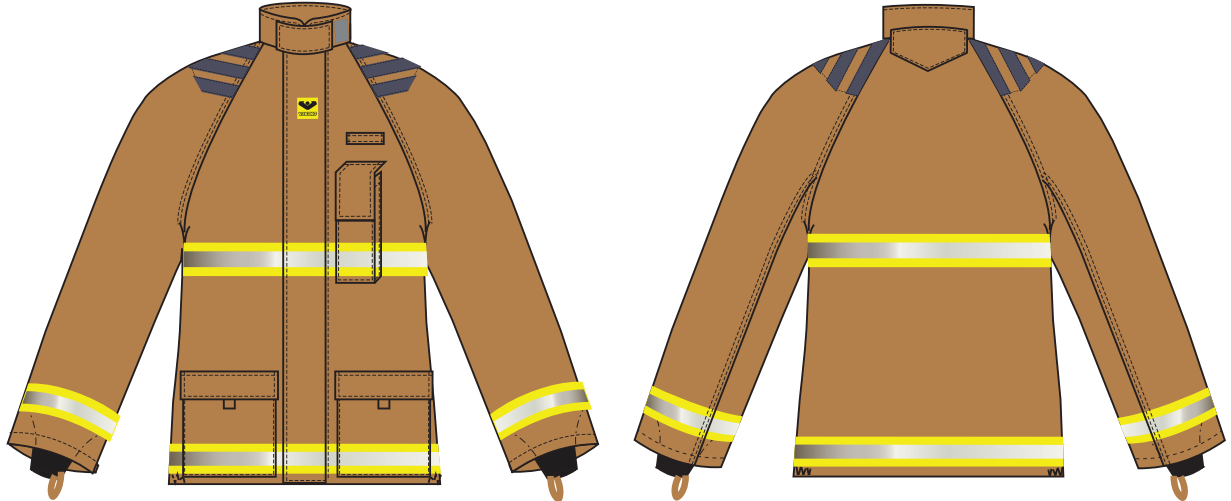


50 Black



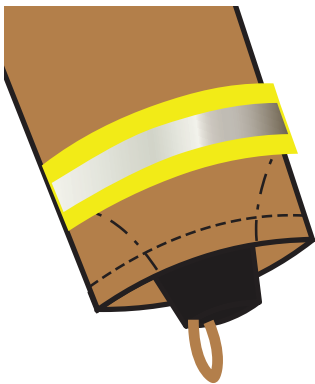
### Shoulder reinforcement

Kevlar stripes & 1 thermal lay

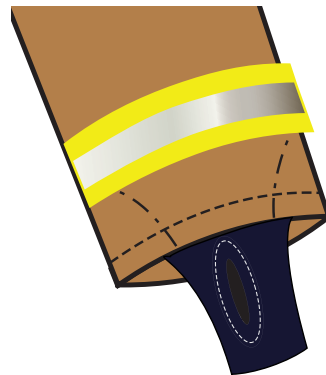


### Wristlets

Black w/ thumb strap

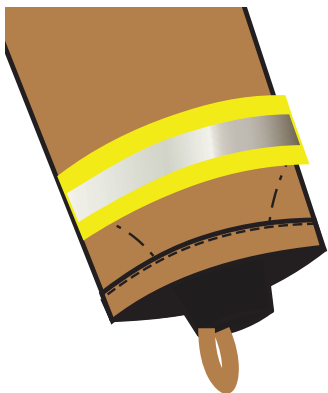


Black w/ thumb hole

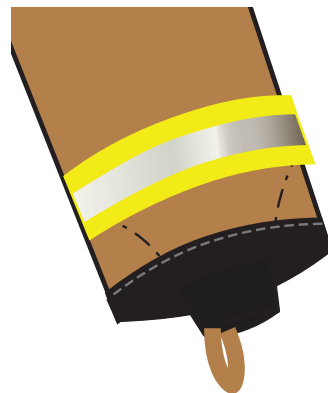


### Hem reinforcement

Outer



Kevlar



### Flashlight strap

Placed on right chest



### Name patch

Prep. name patch 1x5", RC

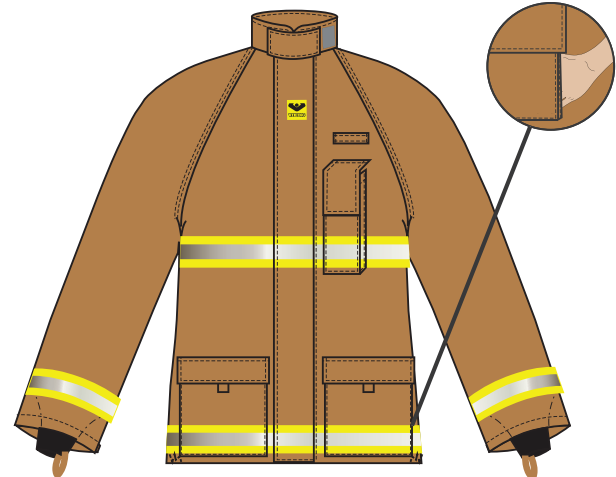


### Coat pockets

Flat coat pockets



Cargo warmer pockets



### Accessories

D-ring pock flap, towards side





# VIKING Configuration options

PS1122

DATE 21/09/2022 - PAGE 4/7 - EDITION 3

---

## Trim color, size and type

---

3" Triple trim, yellow w/silver



3M trim

3" Triple trim, red w/silver



3M trim

---

## Trim placement

---



### Letter type, department tag



2" letters, yellow



2" letters, red

### Accountability tag

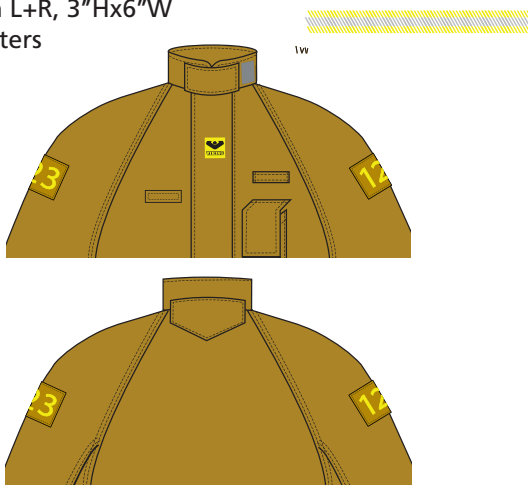
Incl. patch L, 3"Hx6"W  
Max. 4 letters



Incl. patch R, 3"Hx6"W  
Max. 4 letters



Incl. patch L+R, 3"Hx6"W  
Max. 4 letters



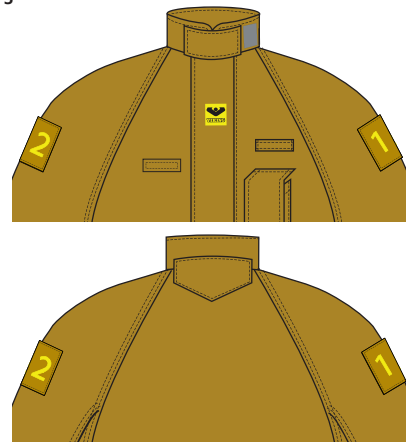
Incl. patch L, 4"Hx3"W  
Max. 2 letters



Incl. patch R, 4"Hx3"W  
Max. 2 letters



Incl. patch L+R v4"Hx3"W  
Max. 2 letters





# VIKING Configuration options

PS1122

DATE 21/09/2022 - PAGE 6/7 - EDITION 3

## Letter type, department tag



2" letters, yellow  
3" letters, yellow



2" letters, red  
3" letters, red

## Design of department tag



### 1 line, straight



2" Letters: Max. 14 pcs  
3" Letters: Max. 10 pcs

### 2 lines, straight



2" Letters: Max. 25 pcs (11 on top, 14 on bottom)  
3" Letters: Max. 16 pcs (6 on top, 10 on bottom)

### 1 line, arched



2" Letters: Max. 14 pcs  
3" Letters: Max. 10 pcs

### 2 lines, top arched



2" Letters: Max. 26 pcs (12 on top, 14 on bottom)  
3" Letters: Max. 14 pcs (10 on top, 4 on bottom)



# VIKING Configuration options

PS1122

DATE 21/09/2022 - PAGE 7/7 - EDITION 3

## Letter type, nametag above hem



2" letters, yellow  
3" letters, yellow



2" letters, red  
3" letters, red

## Type of nametag, hem

Detachable tag



Letter quantity:

2" letters: Max 14 pcs  
3" letters: Max 10 pcs

## Letter type, nametag above hem



2" letters, yellow  
3" letters, yellow



2" letters, red  
3" letters, red

## Drop down name panel at hem



1 line straight



2" Letters: Max. 15 pcs  
3" Letters: Max. 10 pcs

2 lines, both straight



2" Letters: Max. 30 pcs  
(16 on top / 14 on bottom)