

Daniamant



L6 Lifejacket Light

Installation and Maintenance Instructions



Description

The L6 is a lifejacket light which is actuated manually.

Daniamant Limited

Unit 3, The Admiral Park, Airport Service Road, Portsmouth, UK PO3 5RQ
Telephone: +44 (0)23 9267 5100 Facsimile: +44 (0)23 9267 5101
www.daniamant.com



Installation

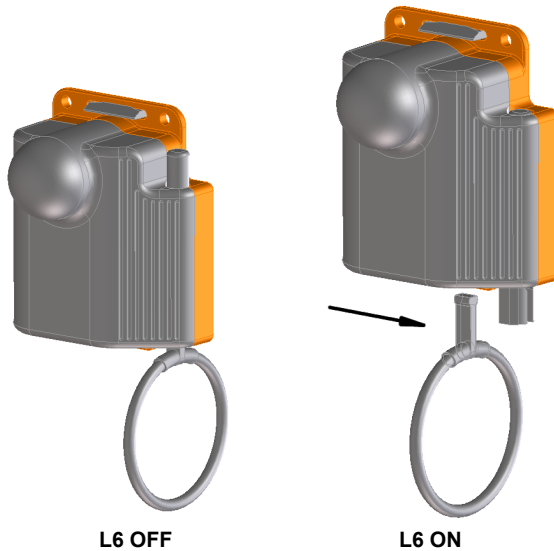
The L6 lifejacket light is for use on all types of lifejackets.

An illustration showing a typical attachment method is shown on Page 3 of this manual. It is the responsibility of the lifejacket manufacturer to ensure that the light is attached securely and is in the correct position on the lifejacket. The L6 light is supplied with a fixing clip. The clip is intended to be placed behind a strip of lifejacket material and the light secured by pressing it into the clip.

Operation

The L6 light is switched on by pulling the ring downwards, or by pressing the plunger into the body of the light. The ring is designed to detach from the light when activated.

The light may be extinguished by refitting the ring (from the direction shown by the arrow) and pressing the plunger back into the body of the light.



Maintenance

Routine service

L6 units are maintenance free, but the following checks should be made annually:

1. Inspect light for signs of damage or corrosion.
2. Pull toggle located towards the bottom of the unit, which will operate a switch and complete the circuit. The light will commence flashing. To extinguish the light, carefully locate the toggle in the switch and push the switch back into the case.

Safety

L6 lights contain Lithium cells. These must be handled correctly:

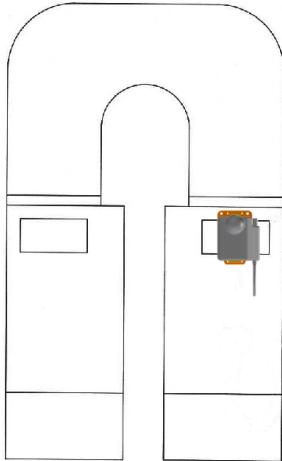
- Do not dismantle battery pack
- Do not make any external electrical connection
- Do not recharge
- Do not incinerate

Store between -30°C and $+65^{\circ}\text{C}$

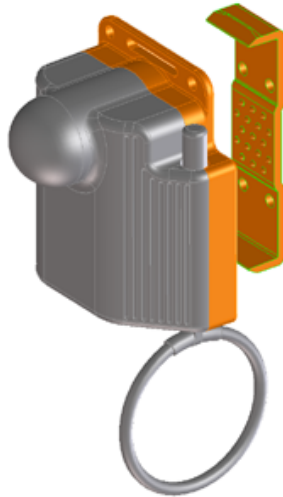
Health and Safety information

Daniamant lithium-powered marine safety light systems have a design life of 5 years. The batteries are hermetically sealed pressurised primary Lithium/Manganese cells, and as supplied are electrically protected by a solid state device, and are environmentally protected by a moulded plastic housing. In this condition the units pose no definable hazard to health.

Information on the composition and behaviour of these products is contained in the Product Safety Data Sheet, available on request from our website (www.daniamant.com) or on request.



L6 light fitted to jacket



L6 light and fixing clip separated to show material path

Product Disposal Instructions

Daniamant's Survivor Location Lights contain batteries as well as electrical and electronic components, and must therefore be segregated from the domestic waste stream and recycled. Disposing of this product correctly will help save valuable resources and prevent any potential negative effects on human health and the environment, which could otherwise arise from inappropriate waste handling. Daniamant's lights are marked with the symbol below which conveys that this waste must be treated separately from household waste.

To ensure compliance with the WEEE and Battery Regulations, the Survivor Location Lights placed on the market in the UK or Denmark should be returned to Daniamant in the UK or Denmark, or deposited in your nearest WEEE Designated Collection Facility, operated by your Local Authority.



Further copies of this installation and maintenance instructions are available to download from our website www.daniamant.com
A copy of these instructions must be held with the ships/owners training manual.