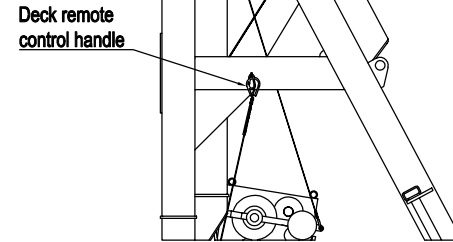
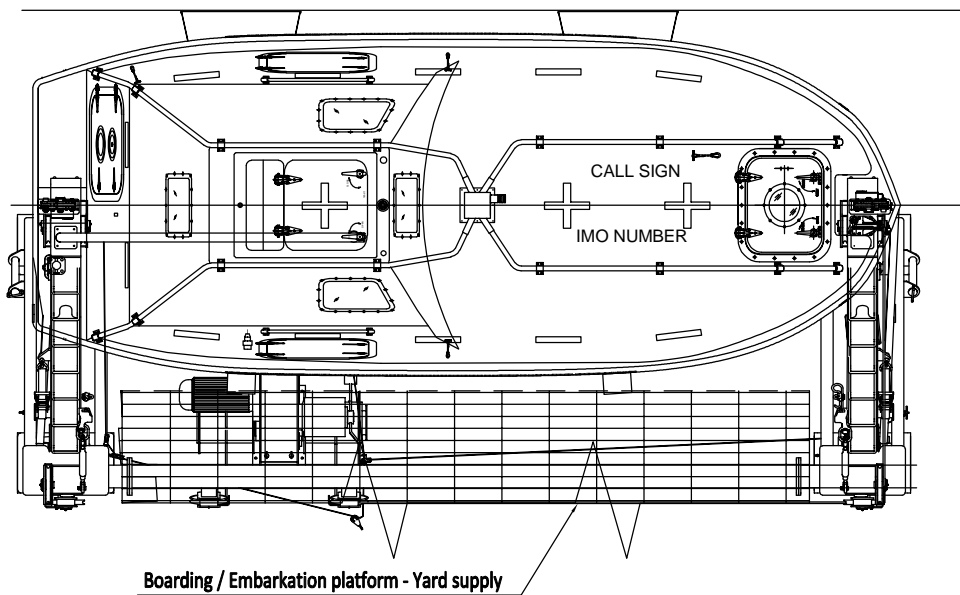
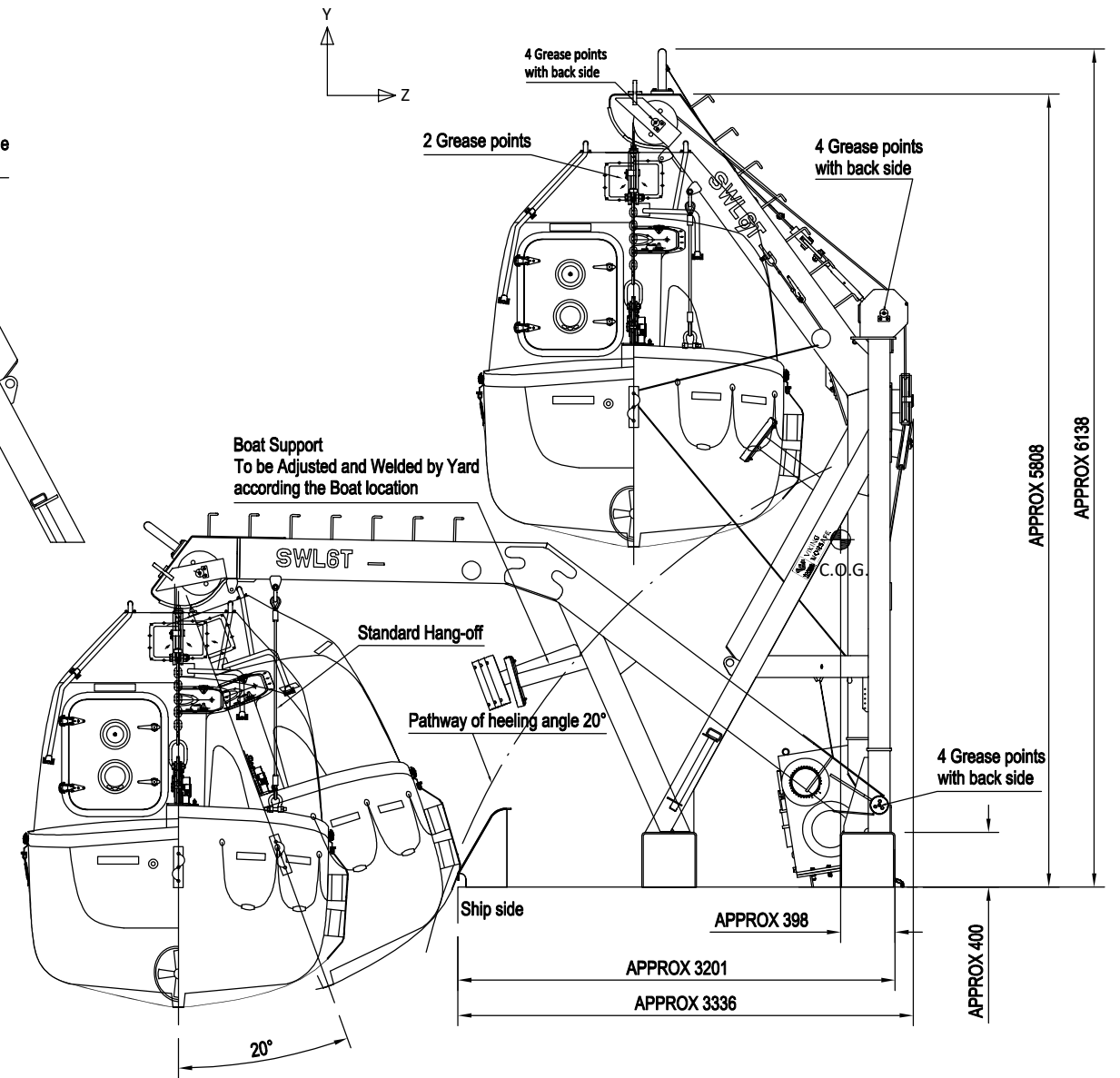


Optional hang-off used for service in stowed position. To be specified in purchase order if required.

The Max. height means the distance from profile steel of center beam to the upside of platform



Deck remote control handle



NOTES:

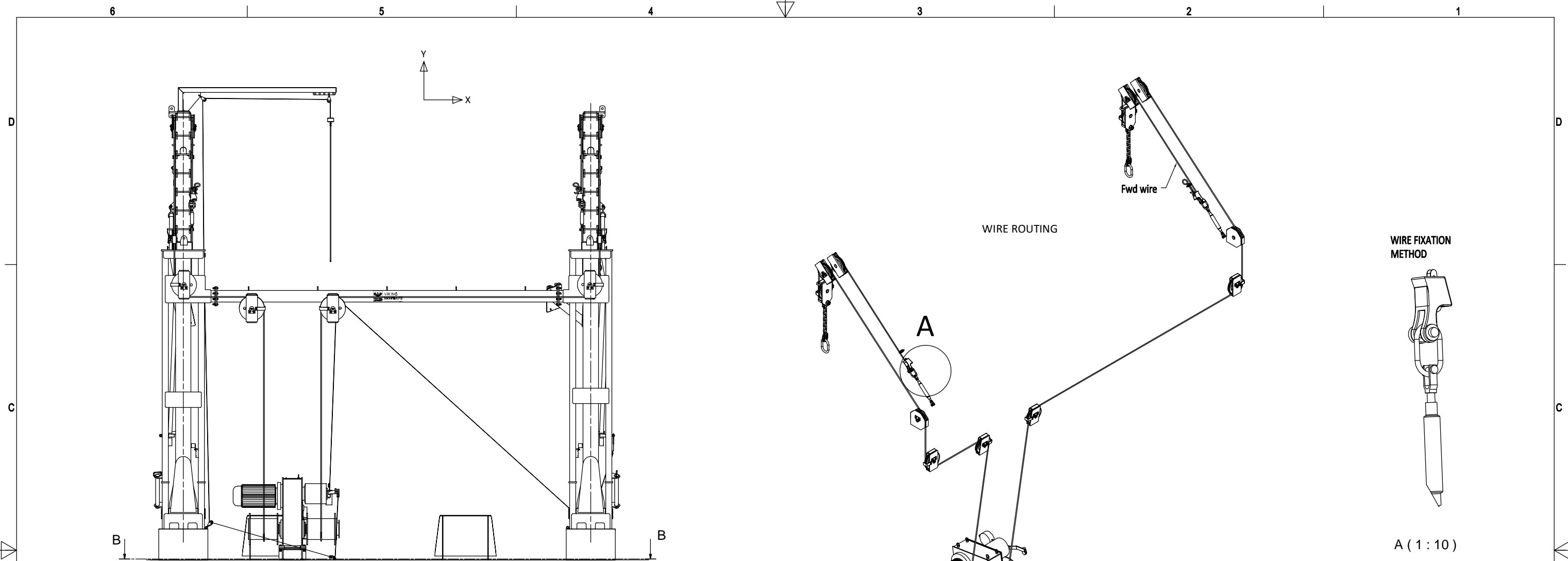
- ACCESS PLATFORMS & BOARDING, WALK WAYS, STAIRS & HANDRAILINGS, DOUBLER PLATES, ETC.: YARD SUPPLY - TO BE FINALIZED DURING LIFEBOAT INSTALLATION.
- ELECTRIC WIRING BY YARD.
- FIELD WELDS TO BE WELDED BY YARD ARE SHOWN BY FLAG: ▶
- ALL FIELD WELDS TO BE PERFORMED ACC. TO APPROVED WPS. (YARD RESPONSIBILITY). ALL FIELD WELDING IS SUBJECT TO CLASS APPROVAL PRIOR TO START WELDING.
- ALL STRUCTURAL STEEL TO BE S355, Q345D, S235 AND Q235. OUTFITTING STEEL TO BE S235, Q235 OR EQUIVALENT.
- FOR WINTERIZATION / ARCTIC AREAS OPERATION STEEL TO BE Q345D/S355 WITH CHARPY TESTING AT -20 DEGREES.
- WIRE LENGTHS:
 MAIN WIRE AFT - $\Phi 16 : 14 \text{ m} + 2 \times (\text{H} + \text{H1})$
 MAIN WIRE FWD - $\Phi 16 : 16 \text{ m} + 2 \times (\text{H} + \text{H1})$
 REMOTE CONTROL WIRE: DECK REMOTE CONTROL WIRE - $\Phi 3 : 11 \text{ m}$
 BOAT REMOTE CONTROL WIRE - $\Phi 3 : 12 \text{ m} + (\text{H} + \text{H1})$
 H= HEIGHT FROM STOWAGE TO L.W.L.
 H1= ADDITIONAL HEIGHT DUE TO LIST AND TRIM CONDITIONS, UNLESS OTHERWISE AGREED.
- FOR LOCATION OF HATCHES, HOOKS AND OTHER BOAT DETAILS SEE BOAT DRAWINGS.
- PORTSIDE DAVIT SHOWN, STARBOARD TO BE MIRRORED.

E-60 DAVIT

SWL HOISTING (MANUAL/ELECTRIC): 4000kg
 SWL LOWERING: 6000kg
 HOISTING SPEED OF LIFE TYPE: APPROX 5 m/min
 HOISTING SPEED OF RESCUE TYPE: APPROX 18 m/min
 DESIGN SPEC SOLAS: 10° TRIM, 20° LIST SIMULTANEOUSLY
 DEAD SHIP LOWERING SPEED: MAXIMUM 60 m/min
 DAVIT WEIGHT APPR. 3583KG INCLUDE DW34H WINCH

REV	DESCRIPTION	BY	CHECK	APPRO	DATE
1	Revised the Main wire dimension	MISO	ALJI	WAGU	18.03.2020
0	Issued for approval	MISO	ALJI	WAGU	08.11.2019

REVISION HISTORY					
DWG SIZE:	A3	SCALE:	1:50	COPY OF:	
CLIENT NO:					
TOLERANCES:	ISO 2768-mk, ISO 13920-BF				
DWG No:	G-503557	REVISION:	1	PROJECT:	
PART NO.	WEIGHT:		N/A	SHEET: 1/2	
			VIKING Norsafe Life-Saving Equipment Norway AS P.O. Box 115 4852 Fabrik NORWAY Tel: +47 37 05 85 00 Fax: +47 37 05 85 01 24/7 Service: +47 37 05 63 33 Email: Viking-Norsafe@viking-life.com		
This drawing is the sole property of VIKING Norsafe Life-Saving Equipment Norway AS. It must not be submitted to other parties nor used in any manner detrimental to our interests. It shall not be copied, reproduced, used for manufacturing or sale without the written consent of VIKING Norsafe Life-Saving Equipment Norway AS. All rights are reserved.					
E-60 DAVIT FOR JYN-57 GENERAL ARRANGEMENT					



- NOTES:
1. IN CASE OF VESSELS CHAMBER DECK FOUNDATIONS ARE YARD SUPPLIED.
 2. FOR DIRECTION OF REACTION FORCES SEE LEGEND ON SHEET 1
 3. ALL FORCES ARE NOMINAL FORCES WITHOUT ANY FACTORS

REACTION FORCES:
 REACTION FORCES AS JOINT LOADS EACH SIDE, MARKED WITH NODES ON DECK INTERFACE.
 FOR ORIENTATION OF FORCES SEE LEGEND WITH MARKED XYZ VECTORS.
 ALL FORCES ARE POINT LOADS, NOMINAL FORCES WITHOUT ANY FACTORS.

JOINT LOADS ON EACH SIDE (FOR ORIENTATION OF FORCES SEE LEGEND)
 REACTIONS FOR DIFFERENT COMBINATION OF 20° LIST & 10° TRIM

	FORCE X	FORCE Y	FORCE Z	MOM X	MOM Y	MOM Z
F1	20KN	136KN	24KN	4KNm	4KNm	6KNm
F2	12KN	79KN	26KN	8KNm	28KNm	16KNm
F3	0	15KN	0	0	0	0

	VIKING NORSAFE		VIKING Norsafe Life-Saving Equipment Norway AS P.O. Box 115 4852 Færvik NORWAY Tel: +47 37 05 85 00 Fax: +47 37 05 85 01 24/7 Service: +47 37 05 83 33 Email: Viking-Norsafe@viking-life.com	
	This drawing is the sole property of VIKING Norsafe Life-Saving Equipment Norway AS. It must not be submitted to other parties nor used in any manner detrimental to our interests. It shall not be copied, reproduced, used for manufacturing or sale without the written consent of VIKING Norsafe Life-Saving Equipment Norway AS. All rights are reserved.		DWG SIZE: A3 CLIENT NO: TOLERANCES: ISO 2768-mk, ISO 13920-BF DWG No.: G-503557	SCALE: 1:50 COPY OF: PROJECTION METHOD:
PART NO.: WEIGHT: N/A SHEET: 2 / 2		E-60 DAVIT FOR JYN-57 GENERAL ARRANGEMENT		

B-B (1:50)
 FOOTPRINT ON DECK