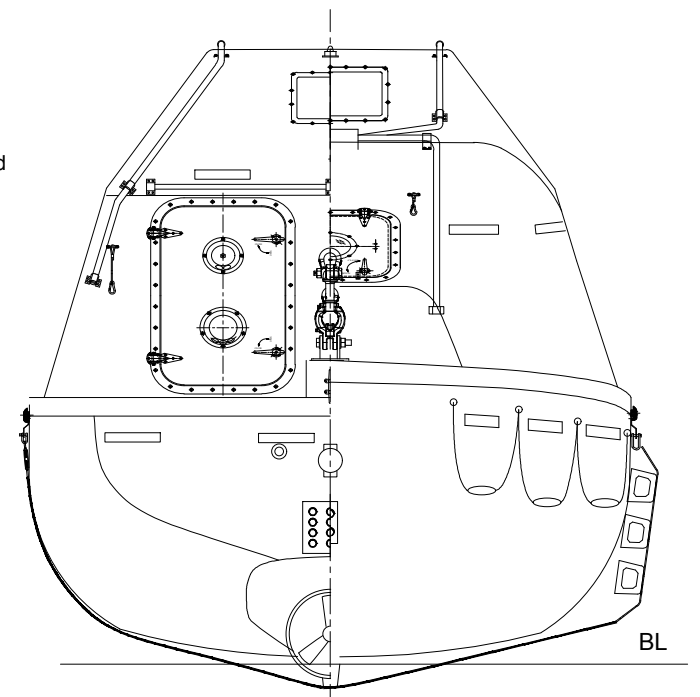
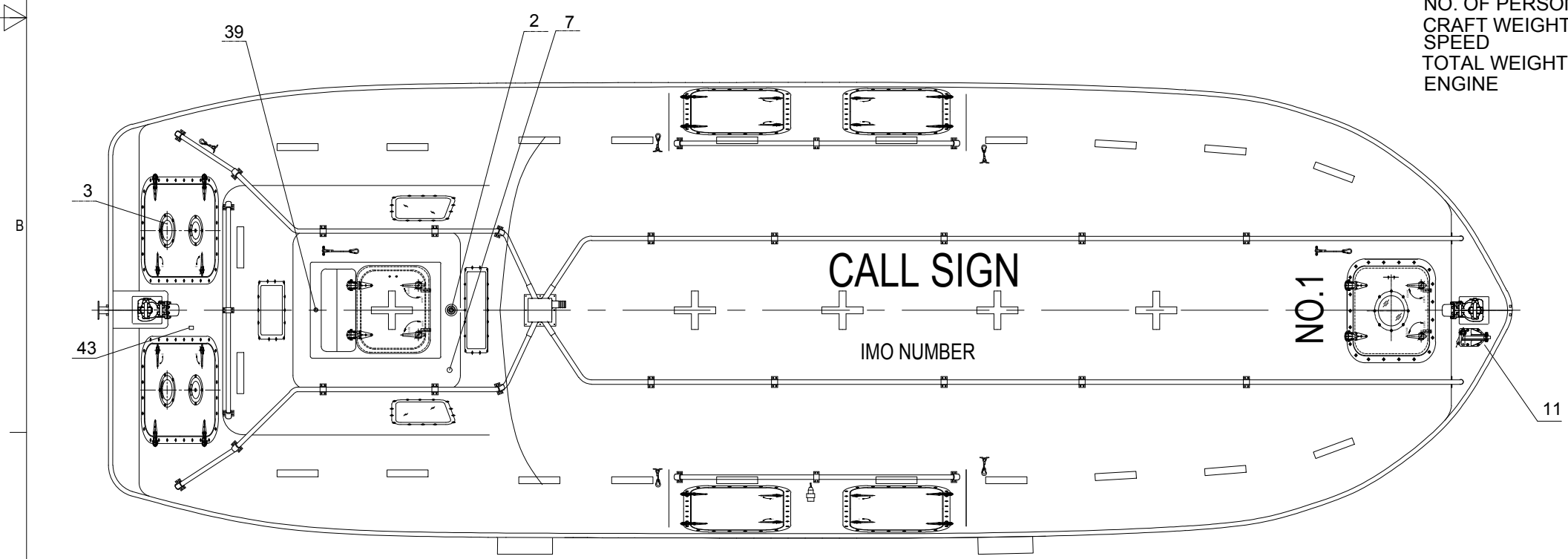


**ELEVATION**

LENGTH (MOULDED) 10.155M  
 BREADTH (MOULDED) 3.25M  
 DEPTH 1.40M  
 TOTAL HEIGHT 3.40M  
 HOOK TYPE NADIRO DIB 75  
 HOOK DIST. 9.675M  
 NO. OF PERSON 105P  
 CRAFT WEIGHT 5937.5KG  
 SPEED >6 KNOTS  
 TOTAL WEIGHT 14600KG (82.5Kg/pers)  
 ENGINE NLDE-3  
 NLDE-4  
 VETUS M4.55  
 BUKH DV29 RME  
 BUKH 36 EPA



**REAR/FRONT VIEW**



**PLAN (BOAT ON PORT SIDE SHOWN)**

48	HYDRAULIC PUMP OR TANK	1	
47	ACCUMULATOR	1	
46	PILOT CONTROLLED VALVE	1	
45	CONTROL PANEL	1	
44	SOCKET FOR BATTERY CHARGING	1	IP67
43	VENT FOR BATTERIES	1	SS 316 & PVC HOSE
42	EQUIPMENT SHELF	2	F.R.P.
41	WATER SENSOR UNIT	1	
40	EMERGENCY RELEASE VALVE	1	
39	RAIN COLLECTION	1	BRASS
38	SPRINKLE OUTLET/PIPING	1 LOT	AISI 316L
37	EMERGENCY STEERING HANDLE	1	HOT DIPPED GALVANIZED STEEL
36	SKATES	2	RUBBER & ALUM. PLATE
35	RAIL	3	SS316
34	FOOD COMPARTMENT	2	F.R.P.
33	OAR/CRUTCH	2	F.R.P.
32	WATER COMPARTMENT	2	F.R.P. WATER TIGHT
31	STEERING GEAR	1	
30	ENGINE & PROPELLER SHAFT	1	
29	STEERING NOZZLE & PROPELLER	1	F.R.P. / NiMn-Bronze Cu3-Cu4
28	BATTERIES	2	70AH
27	AXE	2	
26	PILLAR	1	F.R.P.
25	SPRINKLE PUMP	1	90-80CBPJ
24	DRAIN PLUG	1	BRASS
23	MANUAL PUMP	1	
22	FIRE EXTINGUISHER	1	
21	FUEL TANK	1	SEA WATER RESISTANT ALUM.
20	AIR CYLINDER	4	
19	SAFETY BELT	1/PERS	
18	EQUIPMENT COMPARTMENT	2	
17	DOOR LATCH	1 LOT	AISI 316L & PVC SHIELD WIRE ROPE
16	BACK REST	1	PLYWOOD (18MM THKx400MM H.)
15	CONTROL PANEL	1	
14	SEARCH LIGHT	1	
13	INT. LIGHT	2	
12	INT. LIGHT	1	
11	4.6T PAINTER HOOK	1	F.R.P.
10	GRIPPING BOBBIN	1	HOT DIPPED GALVANIZED STEEL
9	HOOKS DEVICE ARRANGEMENT	2	HOT DIPPED GALVANIZED STEEL
8	LIFE LINE	2	NADIRO DIB 75
7	REMOTE CONTROL LINE HOLE	1	PVC SHIELD WIRE ROPE
6	DOOR WINDOW & HATCH	1 LOT	
5	BOLLARD	1	AISI 316L
4	REFLECT LIGHT STRIP	1 LOT	
3	VENTILATOR	4	
2	POSITION LIGHT	1	
1	RADAR REFLECTOR	1	

NO.	REF. DWG. NO.	DESCRIPTION	QTY.	REMARKS
1		Use new template		KARL PHU THWA 02/07/2019
0		Issued construction		KARL PHU THWA 23/04/2019
REV		DESCRIPTION	BY	CHECK APPRO DATE

**REVISION HISTORY**

**VIKING NORSAFE** Life-Saving Equipment Norway AS  
 P.O. Box 115, 4852 Faerøvik, NORWAY  
 Tel: +47 37 05 85 00, Fax: +47 37 05 85 01, 24/7 Service: +47 37 05 63 33, Email: viking@viking-life.com

DWG. SIZE: A3, SCALE: 1:30, COPY OF: [ ]  
 CLIENT NO.: [ ], PROJECT METHOD: [ ]  
 TOLERANCES: ISO 2768-mk, ISO 13920-BF, REVISION: 1, PROJECT STANDARD: [ ]  
 DWG. No: G-503172, PART NO.: [ ], WEIGHT: [ ], SHEET: 1 / 1  
**EXTERNAL ARRANGEMENT**  
 NADIRO DIB 75  
 JYN-100T  
 GENERAL

Due to manufacturing reasons dimensions may vary up to 50mm