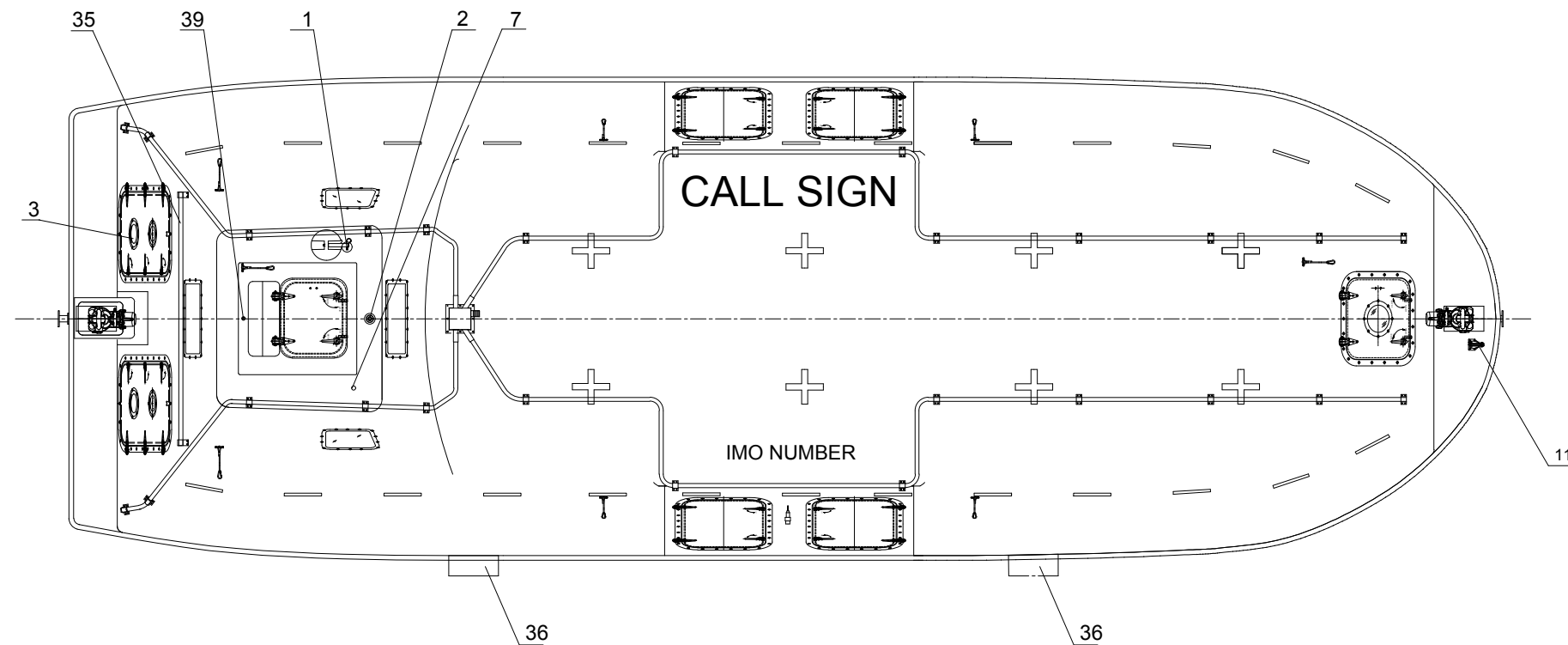
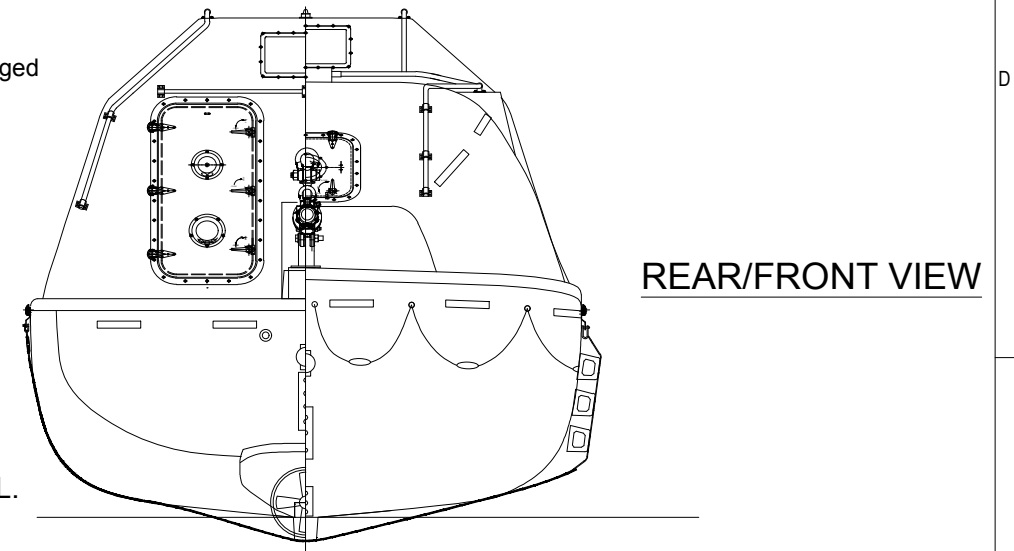


**PROFILE**



**PLAN**

LENGTH (MOULDED) 11.50m  
 BREADTH (MOULDED) 3.80m  
 DEPTH 1.42m  
 HEIGHT 3.54m  
 HOOK DIST. 10.96m  
 NO. OF PERSON 135P  
 HOOK NADIRO DIB 125  
 CRAFT WEIGHT 8485.5KG  
 SPEED >6 KNOTS  
 TOTAL WEIGHT 19623KG (82.5Kg/pers)  
 ENGINE NLDE-4  
 BUKH BETA 36 EPA

48	HYDRAULIC PUMP OR TANK	1	
47	ACCUMULATOR	2	
46	PILOT CONTROLLED VALVE	1	
45	CONTROL PANEL	1	
44	PLUG FOR BATTERY CHARGING	1	IP67
43	VENT FOR BATTERIES	1	SS 316 & PVC HOSE
42	EQUIPMENT SHELF	2	F.R.P.
41	WATER SENSOR UNIT	1	
40	EMERGENCY RELEASE VALVE	1	
39	RAIN COLLECTION	1	BRASS
38	SPRINKLE OUTLET/ PIPING	1 LOT	SEA WATER RESISTANT ALUM.
37	EMERGENCY STEERING HANDLE	1	HOT DIPPED GALVANIZED STEEL
36	SKATE	2	RUBBER & ALUM. PLATE
35	RAIL	5	SEA WATER RESISTANT ALUM.
34	FOOD COMPARTMENT	2	F.R.P.
33	OAR/CRUTCH	2	
32	WATER COMPARTMENT	2	F.R.P. WATER TIGHT
31	STEERING GEAR	1	
30	ENGINE & PROPELLER SHAFT	1	
29	STEERING NOZZLE & PROPELLER	1	F.R.P./NIMn-Bronze Cu3-Cu4
28	BATTERIES	2	70AH
27	AXE	2	
26	PILLAR	1	F.R.P.
25	SPRINKLE PUMP	1	90-80CBPJ
24	DRAIN PLUG	1	BRASS
23	MANUAL PUMP	1	
22	FIRE EXTINGUISHER	1	
21	FUEL TANK	1	SEA WATER RESISTANT ALUM.
20	AIR CYLINDER	5/6	
19	SAFETY BELT	1/PERS	
18	EQUIPMENT COMPARTMENT	2	
17	DOOR LATCH	1 LOT	SS316 & PVC SHIELD WIRE ROPE
16	BACK REST	1	PLYWOOD (18MM THK.x400MM H.)
15	CONTROL PANEL	1	
14	SEARCH LIGHT	1	
13	INT. LIGHT	2	
12	HELMS CHAIR	1	F.R.P.
11	PAINTER HOOK	1	HOT DIPPED GALVANIZED STEEL
10	GRIPING BOBBIN	2	HOT DIPPED GALVANIZED STEEL
9	HOOKS DEVICE ARRANGEMENT	2	NADIRO DIB 125
8	LIFE LINE	2	PVC SHIELD WIRE ROPE
7	REMOTE CONTROL LINE HOLE	1	
6	DOOR, WINDOW & HATCH	1 LOT	
5	BOLLARD	1	SS 316
4	REFLECT LIGHT STRIP	1 LOT	
3	VENTILATOR	4	
2	POSITION LIGHT	1	
1	RADAR REFLECTOR HOLE	1	

NO.	REF. DWG. NO.	DESCRIPTION	QTY.	REMARKS
1		USE NEW TEMPLATE		KARL PHLI THWA 19.06.2019
0		ISSUED FOR CONSTRUCTION		KARL PHLI THWA 16.05.2019
REV		DESCRIPTION	BY	CHECK APPRO DATE

**REVISION HISTORY**

**VIKING NORSAFE**

VIKING Norsafe Life-Saving Equipment Norway AS  
 P.O. Box 115  
 4852 Færevik  
 NORWAY  
 Tel: +47 37 05 85 00  
 Fax: +47 37 05 85 01  
 24/7 Service: +47 37 05 63 33  
 Email: viking@viking-life.com

This drawing is the sole property of VIKING Norsafe Life-Saving Equipment Norway AS. It must not be submitted to other parties nor used in any manner detrimental to our interests. It shall not be copied, reproduced, used for manufacturing or sale without the written consent of VIKING Norsafe Life-Saving Equipment Norway AS. All rights are reserved.

DWG SIZE: A3	SCALE: 1:30	COPY OF:	PART NO.	WEIGHT:	SHEET: 1/1
CLIENT NO:	PROJECTION METHOD:	EXTERNAL ARRANGEMENT			
TOLERANCES: ISO 2768-mk, ISO 13920-BF	REVISION: 1	NADIRO DIB 125			
DWG No: G-503226	PROJECT: STANDARD	JYN-115T			
		GENERAL			

Due to manufacturing reasons dimensions may vary up to 50mm